

## Recombinant Human PTP4A2 Protein (Met1-Gln167), C-His tagged

Cat. No. PTP4A2-6608H Lot. No. (See product label)

### SPECIFICATION

<b>Product Overview</b>	Recombinant human PTP4A2 (Met1-Gln167) fused with the C-terminal His tag was expressed in E. coli.
<b>Species</b>	Human
<b>Source</b>	E.coli
<b>ProteinLength</b>	Met1-Gln167
<b>Form</b>	Lyophilized powder/frozen liquid
<b>Molecular Mass</b>	18.37 kDa
<b>Purity</b>	> 90 % as determined by SDS-PAGE
<b>Notes</b>	For research use only.
<b>Storage</b>	Use a manual defrost freezer and avoid repeated freeze thaw cycles. Store at 2 to 8 centigrade for one week. Store at -20 to -80 centigrade for twelve months from the date of receipt.
<b>Storage Buffer</b>	Supplied as solution form in PBS or lyophilized from PBS.
<b>Reconstitution</b>	Reconstitute in sterile water for a stock solution.

 Tel: 1-631-559-9269 1-516-512-3133

 Email: [info@creative-biomart.com](mailto:info@creative-biomart.com)  Fax: 1-631-938-8127

 45-1 Ramsey Road, Shirley, NY 11967, USA

**Shipping**

They are shipped out with dry ice/blue ice unless customers require otherwise.

**GENE INFORMATION**
**Gene Name**

PTP4A2 protein tyrosine phosphatase type IVA, member 2 [ Homo sapiens (human) ]

**Official Symbol**

PTP4A2

**Synonyms**

PTP4A2; protein tyrosine phosphatase type IVA, member 2; PTP4A; protein tyrosine phosphatase type IVA 2; HU PP 1; OV 1; PRL 2; ptp IV1a; PTPCAAX2; PTP (CAAXII); protein tyrosine phosphatase IVA; protein-tyrosine phosphatase 4a2; protein tyrosine phosphatase IVA2; phosphatase of regenerating liver 2; protein-tyrosine phosphatase of regenerating liver 2; HH13; OV-1; PRL2; HH7-2; PRL-2; HU-PP-1; ptp-IV1a; ptp-IV1b;

**Gene ID**

8073

**mRNA Refseq**

NM\_001195100

**Protein Refseq**

NP\_001182029

**MIM**


601584

**UniProt ID**

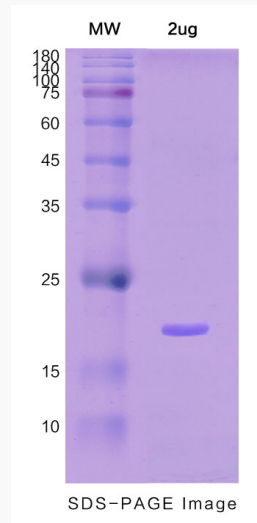
Q12974


 Tel: 1-631-559-9269 1-516-512-3133

 Email: [info@creative-biomart.com](mailto:info@creative-biomart.com)  Fax: 1-631-938-8127


 45-1 Ramsey Road, Shirley, NY 11967, USA

**SDS-PAGE**



 Tel: 1-631-559-9269 1-516-512-3133

 Email: [info@creative-biomart.com](mailto:info@creative-biomart.com)  Fax: 1-631-938-8127

 45-1 Ramsey Road, Shirley, NY 11967, USA