

Recombinant Human PTP4A3 protein, His-tagged

Cat. No. PTP4A3-1554H Lot. No. (See product label)

SPECIFICATION

Product Overview	Recombinant Human PTP4A3 protein(O75365-1)(Met1-Cys170), fused with N-terminal His tag, was expressed in E.coli.
Species	Human
Source	N-His
ProteinLength	Met1-Cys170
Tag	N-His
Form	Supplied as 0.22µm filtered solution in 20mM PB, 500mM NaCl, 2mM DTT, 20% Glycerol (pH 7.5).
Bio-activity	Measured by its ability to cleave a substrate. p-Nitrophenyl phosphate (pNPP). The specific activity is > 0.5 pmol/min/µg.
Molecular Mass	The protein has a predicted MW of 20.29 kDa same as Tris-Bis PAGE result.
Endotoxin	Less than 1EU per µg by the LAL method.
Purity	> 95% as determined by Tris-Bis PAGE; > 95% as determined by HPLC.
Storage	Valid for 12 months from date of receipt when stored at -80°C.;Recommend to aliquot the protein into smaller quantities for optimal storage. Please do not repeated freeze-

 Tel: 1-631-559-9269 1-516-512-3133

 Email: info@creative-biomart.com  Fax: 1-631-938-8127

 45-1 Ramsey Road, Shirley, NY 11967, USA

thaw cycles.

Reconstitution

It is recommended that sterile water be added to the vial to prepare a stock solution of 0.2 ug/ul. Centrifuge the vial at 4°C before opening to recover the entire contents.

GENE INFORMATION

Gene Name PTP4A3 protein tyrosine phosphatase type IVA, member 3 [Homo sapiens]

Official Symbol PTP4A3

Synonyms

PTP4A3; protein tyrosine phosphatase type IVA, member 3; protein tyrosine phosphatase type IVA 3; PRL 3; PRL R; PRL3; protein-tyrosine phosphatase 4a3; potentially prenylated protein tyrosine phosphatase; protein-tyrosine phosphatase of regenerating liver 3; PRL-3; PRL-R;

Gene ID 11156

mRNA Refseq NM_007079

Protein Refseq NP_009010

MIM 606449

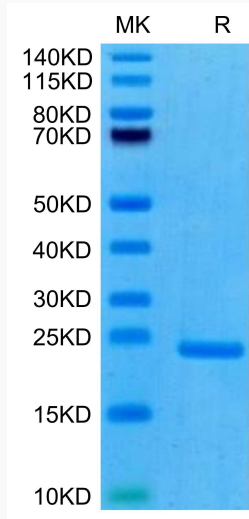
UniProt ID O75365

 Tel: 1-631-559-9269 1-516-512-3133

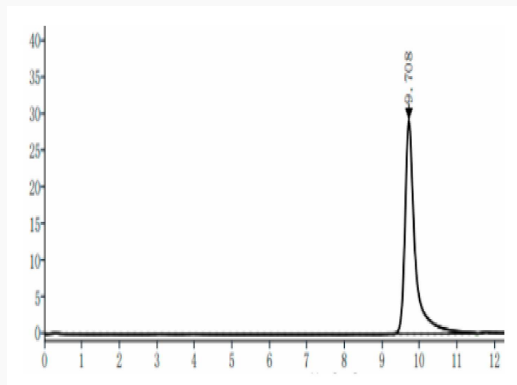
 Email: info@creative-biomart.com  Fax: 1-631-938-8127

 45-1 Ramsey Road, Shirley, NY 11967, USA

Tris-Bis PAGE



SEC-HPLC



 Tel: 1-631-559-9269 1-516-512-3133

 Email: info@creative-biomart.com  Fax: 1-631-938-8127

 45-1 Ramsey Road, Shirley, NY 11967, USA