

Active Recombinant Human PTP4A3, 2-173 aa, His-tagged

Cat. No. PTP4A3-677H Lot. No. (See product label)

SPECIFICATION

Product Overview	Recombinant human PRL-3 was produced in <i>E. coli</i> . The catalytic domain of PRL-3 (aa 2-173) is fused at the N-terminus to a His-tag. 19.5kDa.
Species	Human
Source	<i>E. coli</i>
Protein Length	2-173 a.a.
Description	PRL phosphatases comprise a class of small oncogenic phosphatases that are prenylated at their carboxyl-termini. PRL-3 is overexpressed in colon tumors metastasizing to the liver, but not in normal colorectal epithelium. Metastatic lesions have also shown gene amplification of the PRL-3 gene. PRL-3-blocking antibodies reduce metastatic tumor formation by cells overexpressing PRL-3.
Source/Host	<i>E. coli</i> .
Concentration	0.05µg/µl.
Purity	≥90% (SDS-PAGE).
Formulation	Liquid. In 25mM TRIS-HCl, pH 8.0, containing 100mM sodium chloride, 0.05% Tween 20, 20% glycerol and 3mM dithiothreitol.
Specific Activity	0.774U/µg. One unit will hydrolyze 1pmol para-nitrophenyl phosphate (PNPP) per

 Tel: 1-631-559-9269 1-516-512-3133

 Email: info@creative-biomart.com  Fax: 1-631-938-8127

 45-1 Ramsey Road, Shirley, NY 11967, USA

minute at 37°C. Assay buffer: 50mM TRIS, pH 7.4, containing 150mM sodium chloride, 5mM dithiothreitol and 12.5mM PNPP.

Application

Study of enzyme kinetics and regulation, dephosphorylation of target substrates, and inhibitor screening.

Use/Stability

Dilution of the enzyme followed by refreezing may lead to loss of activity.

Long Term Storage

-20°C.

GENE INFORMATION

Gene Name

[PTP4A3 protein tyrosine phosphatase type IVA, member 3 \[Homo sapiens \]](#)

Synonyms

PTP4A3; protein tyrosine phosphatase type IVA, member 3; PRL3; PRL-3; PRL-R; potentially prenylated protein tyrosine phosphatase; EC 3.1.3.48

Gene ID

[11156](#)

mRNA Refseq

[NM_007079](#)

Protein Refseq

[NP_009010](#)

MIM

[606449](#)

UniProt ID

[O75365](#)

Chromosome Location


8q24.3

Function

hydrolase activity; identical protein binding; prenylated protein tyrosine phosphatase

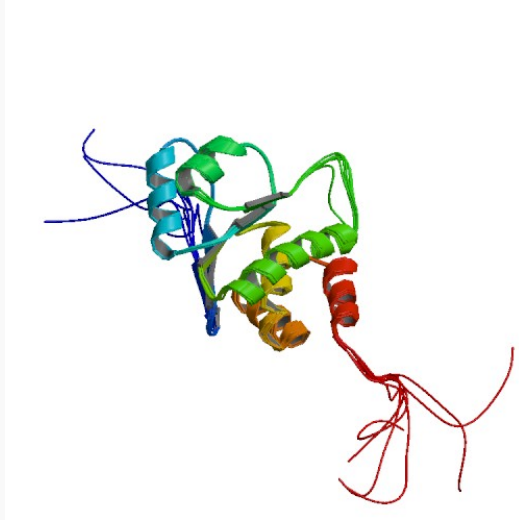
 Tel: 1-631-559-9269 1-516-512-3133

 Email: info@creative-biomart.com  Fax: 1-631-938-8127

 45-1 Ramsey Road, Shirley, NY 11967, USA

activity

PDB rendering based
on 1r6h.



 Tel: 1-631-559-9269 1-516-512-3133

 Email: info@creative-biomart.com  Fax: 1-631-938-8127

 45-1 Ramsey Road, Shirley, NY 11967, USA