

Recombinant Human PTPDC1 Protein, Myc/DDK-tagged, C13 and N15-labeled

Cat. No. PTPDC1-1426H **Lot. No.** (See product label)

SPECIFICATION

Product Overview

PTPDC1 MS Standard C13 and N15-labeled recombinant protein (NP_689635) with a C-terminal MYC/DDK tag, was expressed in HEK293 cells.

Species

Human

Source

HEK293

Description

The protein encoded by this gene contains a characteristic motif of protein tyrosine phosphatases (PTPs). PTPs regulate activities of phosphoproteins through dephosphorylation. They are signaling molecules involved in the regulation of a wide variety of biological processes. The specific function of this protein has not yet been determined. Alternatively spliced transcript variants encoding distinct isoforms have been identified.

Molecular Mass

90 kDa

AA Sequence

MQVQDATRRPSAVRFLSSFLQGRRHSTSDPVLRLQQARRGSLGSGSATKLLSSS
 SLQVMVAVSSVSHAEGNPTFPERKRNLERPTPKYTKVGERLRHVIPGHMACSMAC
 GGRACKYENPARWSEQEQAIKGVYSSWVTDNILAMARPSSELLEKYHIIDQFLSHGI
 KTIINLQRPGEHASCNPLEQESGFTYLPEAFMEAGIYFYNGWKDYGVASLTTILD
 MVKVMTFALQEGKVAIHCHAGLGRTGVLIACYLVFATRMTADQAIIFVRAKRPNSIQT
 RGQLLCVREFTQFLTPLRNIFSCCDPKAHAVTLPQYLIRQRHLLHGYEARLLKHVPKII
 HLVCKLLLDLAENRPVMMKDVSEGPGLSAEIEKTMSEMVTMQLDKELLRHDSVSN

 Tel: 1-631-559-9269 1-516-512-3133

 Email: info@creative-biomart.com  Fax: 1-631-938-8127

 45-1 Ramsey Road, Shirley, NY 11967, USA

PPNPTAVAADFDNRGMIFSNEQQFDPLWKRRNVECLQPLTHLKRRLSYSDSDLKRA
 ENLLEQGETPQTVPAQILVGHKPRQQKLISHCYIPQSPEPDLHKEALVRSTLSFWSQ
 SKFGGLEGLKDNGSPIFHGRIIPKEAQQSGAFSADVSGSHSPGEPVSPSFANVHKDP
 NPAHQVSHCQCKTHGVGSPGSRQNSRTPRSPDCGSSPKAQFLVEHETQDSK
 DLSEAASHSALQSELSAEARRILAAKALANL NESVEKEELKRKVEMWQKELNSRDG
 AWERICGERDPFILCSLMWSWVEQLKEPVITKEDVDMLVDRRADAAEALFLEKGGQ
 HQTILCVLHCIVNLQTIPVDVEEAFLAHAIKAFTKVNFDSENGPTVYNTLKKIFKHTLEE
 KRKMTKDGPKPGLTRTRPLEQKLISEEDLAANDILDYKDDDDKV

| | |
|-----------------------|--|
| Purity | > 80% as determined by SDS-PAGE and Coomassie blue staining |
| Stability | Stable for 3 months from receipt of products under proper storage and handling conditions. |
| Storage | Store at -80 centigrade. Avoid repeated freeze-thaw cycles. |
| Concentration | 50 µg/mL as determined by BCA |
| Storage Buffer | 100 mM glycine, 25 mM Tris-HCl, pH 7.3. |

GENE INFORMATION

| | |
|------------------------|--|
| Gene Name | PTPDC1 protein tyrosine phosphatase domain containing 1 [Homo sapiens (human)] |
| Official Symbol | PTPDC1 |
| Synonyms | PTPDC1; protein tyrosine phosphatase domain containing 1; protein tyrosine phosphatase domain-containing protein 1; FLJ37312; protein tyrosine phosphatase PTP9Q22; PTP9Q22; FLJ42922; |

 Tel: 1-631-559-9269 1-516-512-3133

 Email: info@creative-biomart.com  Fax: 1-631-938-8127

 45-1 Ramsey Road, Shirley, NY 11967, USA

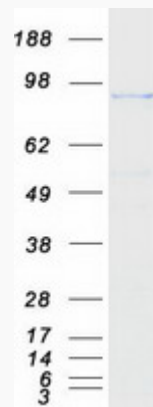
Gene ID 138639

mRNA Refseq NM_152422

Protein Refseq NP_689635

UniProt ID A2A3K4

SDS-PAGE



 Tel: 1-631-559-9269 1-516-512-3133

 Email: info@creative-biomart.com  Fax: 1-631-938-8127

 45-1 Ramsey Road, Shirley, NY 11967, USA