

## Active Recombinant Human PTPN11 protein, GST-tagged

Cat. No. PTPN11-31402TH Lot. No. (See product label)

### SPECIFICATION

<b>Product Overview</b>	Recombinant Human PTPN11(224–529 aa) fused with GST tag at N-terminal was expressed in E. coli.
<b>Species</b>	Human
<b>Source</b>	E.coli
<b>ProteinLength</b>	224-529 a.a.
<b>Description</b>	Mammalian PTPases can be subdivided into 1 of 2 broad categories: transmembrane receptor PTPases and intracellular PTPases. PTPN11 is one of the 2 closely related mammalian intracellular PTPases whose sequences encode 2 tandem SRC homology 2 (SH2) domains that are located at the amino-terminal side of a single PTPase catalytic domain. This PTP is widely expressed in most tissues and plays a regulatory role in various cell signaling events that are important for a diversity of cell functions, such as mitogenic activation, metabolic control, transcription regulation, and cell migration.
<b>Form</b>	25 mM Tris-HCl, pH 8.0, 75 mM NaCl, 0.05% Tween-20, 50% glycerol, 2 mM EDTA, 1 mM DTT, 10 mM glutathione.
<b>Bio-activity</b>	10 U/g
<b>Molecular Mass</b>	62 kDa

 Tel: 1-631-559-9269 1-516-512-3133

 Email: [info@creative-biomart.com](mailto:info@creative-biomart.com)  Fax: 1-631-938-8127

 45-1 Ramsey Road, Shirley, NY 11967, USA

**AA Sequence**

MSPILGYWKIKGLVQPTRLLEYLEEKYEEHLYERDEGDKWRNKKFELGLEFPNLPY  
 YIDGDVKLTQSMARIYIADKHNMLGGCPKERAEISMLEGAVLDIRYGVSR IAYSKD FE  
 TLKVDFLSKLPEMLKMFEDRLCHKTYLNGDHVTHPDFMLYDALDVVLYMDPMCLDA  
 FPKLVCFKKRIEAI PQIDKYLKSSKYIAWPLQG WQATFGGGDHPPKSDLVPRGSASA  
 EIESRVRELSKLAETTDKVKQGFWE EFETLQQQECKLLYSRKEGQRQENKNKNRYK  
 NILPFDHTRVVLHDGDPNEPVSDYINANIIMPEFETKCNNSKPKKSYIATQGCLQNTV  
 NDFWRMV FQENSRVIVMTTKEVERGKSKCVKYWPDEYALKEYGVMRVRNVKESAA  
 HDYTLRELKLSKVGQGN TERTVWQYHFRTWPDHGVPSPDGGVLD FLEEVH HKQES  
 IMDAGPVVVHCSAGIGRTGTFIVIDILIDIIREKGVDCDIDVPKTIQM VRSQRS GMVQTE  
 AQYRFIYMAVQHYIETLQRRILE

<b>Purity</b>	> 90%
<b>Unit Definition</b>	One unit will hydrolyze 1 nmol p-nitrophenyl phosphate per minute at pH 7.4 and 30 centigrade.
<b>Applications</b>	Useful for the study of enzyme kinetics and regulation, to dephosphorylate target substrates and for screening inhibitors.
<b>Storage</b>	>12 months at -80 centigrade. Avoid freeze/thaw cycles.
<b>Concentration</b>	0.73 mg/ml

## GENE INFORMATION

<b>Gene Name</b>	PTPN11 protein tyrosine phosphatase, non-receptor type 11 [ Homo sapiens ]
<b>Official Symbol</b>	PTPN11
<b>Synonyms</b>	PTPN11; protein tyrosine phosphatase, non-receptor type 11; Noonan syndrome 1 , NS1; tyrosine-protein phosphatase non-receptor type 11; BPTP3; PTP2C; SH PTP2;

 Tel: 1-631-559-9269 1-516-512-3133

 Email: [info@creative-biomart.com](mailto:info@creative-biomart.com)  Fax: 1-631-938-8127

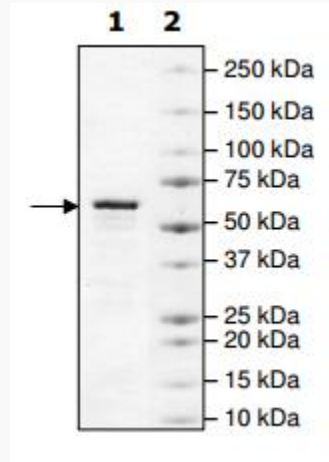
 45-1 Ramsey Road, Shirley, NY 11967, USA


	SHP 2; SHP2; PTP-2C; protein tyrosine phosphatase-2; protein-tyrosine phosphatase 1D; protein-tyrosine phosphatase 2C; CFC; NS1; PTP-1D; SH-PTP2; SH-PTP3; MGC14433;
<b>Gene ID</b>	<a href="#">5781</a>
<b>mRNA Refseq</b>	<a href="#">NM_002834</a>
<b>Protein Refseq</b>	<a href="#">NP_002825</a>
<b>MIM</b>	<a href="#">176876</a>
<b>UniProt ID</b>	<a href="#">Q06124</a>
<b>Chromosome Location</b>	12q24.1
<b>Pathway</b>	Adaptive Immune System, organism-specific biosystem; Adipocytokine signaling pathway, organism-specific biosystem; Adipocytokine signaling pathway, conserved biosystem; Angiotensin receptor Tie2-mediated signaling, organism-specific biosystem; Axon guidance, organism-specific biosystem; B Cell Receptor Signaling Pathway, organism-specific biosystem; CTLA4 inhibitory signaling, organism-specific biosystem;
<b>Function</b>	hydrolase activity; non-membrane spanning protein tyrosine phosphatase activity; non-membrane spanning protein tyrosine phosphatase activity; protein binding; protein tyrosine phosphatase activity;

 Tel: 1-631-559-9269 1-516-512-3133


 Email: [info@creative-biomart.com](mailto:info@creative-biomart.com)  Fax: 1-631-938-8127

 45-1 Ramsey Road, Shirley, NY 11967, USA



 Tel: 1-631-559-9269 1-516-512-3133

 Email: [info@creative-biomart.com](mailto:info@creative-biomart.com)  Fax: 1-631-938-8127

 45-1 Ramsey Road, Shirley, NY 11967, USA