

## Recombinant Full Length Human PTPN11 Protein (Met1-Arg593), N-His tagged

Cat. No. PTPN11-6100H Lot. No. (See product label)

### SPECIFICATION

<b>Product Overview</b>	Recombinant human PTPN11 (Met1-Arg593) fused with the N-His tag was expressed in E. coli.
<b>Species</b>	Human
<b>Source</b>	E.coli
<b>ProteinLength</b>	Met1-Arg593
<b>Form</b>	Lyophilized powder/frozen liquid
<b>Molecular Mass</b>	70.32 kDa
<b>Purity</b>	> 90 % as determined by SDS-PAGE
<b>Notes</b>	For research use only.
<b>Storage</b>	Use a manual defrost freezer and avoid repeated freeze thaw cycles. Store at 2 to 8 centigrade for one week. Store at -20 to -80 centigrade for twelve months from the date of receipt.
<b>Storage Buffer</b>	Lyophilized from a solution in PBS, pH 7.4, 0.02 % NLS, 1 mM EDTA, 4 % Trehalose, 1 % Mannitol.

 Tel: 1-631-559-9269 1-516-512-3133

 Email: [info@creative-biomart.com](mailto:info@creative-biomart.com)  Fax: 1-631-938-8127

 45-1 Ramsey Road, Shirley, NY 11967, USA

**Reconstitution** Reconstitute in sterile water for a stock solution.

**Shipping** They are shipped out with dry ice/blue ice unless customers require otherwise.

## GENE INFORMATION

**Gene Name** [PTPN11 protein tyrosine phosphatase, non-receptor type 11 \[ Homo sapiens \(human\) \]](#)

**Official Symbol** [PTPN11](#)

**Synonyms** PTPN11; protein tyrosine phosphatase, non-receptor type 11; Noonan syndrome 1, NS1; tyrosine-protein phosphatase non-receptor type 11; BPTP3; PTP2C; SH PTP2; SHP 2; SHP2; PTP-2C; protein tyrosine phosphatase-2; protein-tyrosine phosphatase 1D; protein-tyrosine phosphatase 2C; CFC; NS1; PTP-1D; SH-PTP2; SH-PTP3; MGC14433;

**Gene ID** [5781](#)

**mRNA Refseq** [NM\\_002834](#)

**Protein Refseq** [NP\\_002825](#)

**MIM** [176876](#)

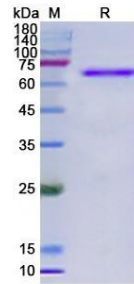
**UniProt ID** [Q06124](#)

 Tel: 1-631-559-9269 1-516-512-3133

 Email: [info@creative-biomart.com](mailto:info@creative-biomart.com)  Fax: 1-631-938-8127

 45-1 Ramsey Road, Shirley, NY 11967, USA

**SDS-PAGE**



 Tel: 1-631-559-9269 1-516-512-3133

 Email: [info@creative-biomart.com](mailto:info@creative-biomart.com)  Fax: 1-631-938-8127

 45-1 Ramsey Road, Shirley, NY 11967, USA