

Recombinant Human PTPN13,GST-tagged,Active

Cat. No. PTPN13-463H Lot. No. (See product label)

SPECIFICATION

Product Overview	Recombinant human PTPN13 (2169-2485) was expressed in <i>E.coli</i> cells using a N-terminal GST tag. MW=61kDa.
Species	Human
Source	E.coli
Protein Length	2169-2485 a.a.
Description	PTPs are known to be signaling molecules that regulate a variety of cellular processes including cell growth, differentiation, mitotic cycle, and oncogenic transformation. PTPN13 is a large protein that possesses a PTP domain at C-terminus, and multiple noncatalytic domains, which include a domain with similarity to band 4.1 superfamily of cytoskeletal-associated proteins, a region consisting of five PDZ domains, and a leucine zipper motif. PTPN13 binds to a negative regulatory domain in Fas that inhibits Fas-induced apoptosis.
Sequence	2169-2485.
Applications	Phosphatase Assay, Western Blot.
Storage And Stability	Store product at -70°C . For optimal storage, aliquot target into smaller quantities after centrifugation and store at recommended temperature. For most favorable performance, avoid repeated handling and multiple freeze/thaw cycles.

 Tel: 1-631-559-9269 1-516-512-3133

 Email: info@creative-biomart.com  Fax: 1-631-938-8127

 45-1 Ramsey Road, Shirley, NY 11967, USA

GENE INFORMATION

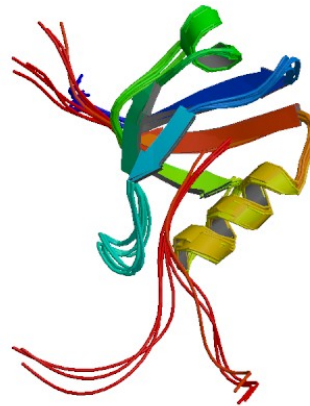
Gene Name	PTPN13 protein tyrosine phosphatase, non-receptor type 13 (APO-1/CD95 (Fas)-associated phosphatase) [Homo sapiens]
Synonyms	PTPN13; protein tyrosine phosphatase, non-receptor type 13 (APO-1/CD95 (Fas)-associated phosphatase); PNP1; FAP-1; PTP1E; PTPL1; PTPLE; PTP-BL; PTP-BAS; DKFZp686J1497; Tyrosine-protein phosphatase non-receptor type 13; EC 3.1.3.48; Protein-tyrosine phosphatase 1E; PTP-E1; hPTPE1; Protein-tyrosine phosphatase PTPL1; Fas-associated protein-tyrosine phosphatase 1
Gene ID	5783
mRNA Refseq	NM_006264
Protein Refseq	NP_006255
UniProt ID	Q12923
Chromosome Location	4q21.3
MIM	600267
Function	hydrolase activity; protein binding; protein tyrosine phosphatase activity

 Tel: 1-631-559-9269 1-516-512-3133

 Email: info@creative-biomart.com  Fax: 1-631-938-8127

 45-1 Ramsey Road, Shirley, NY 11967, USA

PDB rendering based
on 1d5g.



 Tel: 1-631-559-9269 1-516-512-3133

 Email: info@creative-biomart.com  Fax: 1-631-938-8127

 45-1 Ramsey Road, Shirley, NY 11967, USA