

Active Recombinant Full Length Human PTPN6 protein, His-tagged

Cat. No. PTPN6-289H **Lot. No.** (See product label)

SPECIFICATION

Product Overview	Recombinant Human PTPN6 fused with His tag at C-terminal was expressed in E. coli.
Species	Human
Source	E.coli
ProteinLength	1-595 a.a.
Description	PTPN6 gene is preferentially expressed in a variety of hematopoietic cells, and is an early response gene in lymphokine stimulated cells. The noncatalytic N-terminus of this PTP can interact with MAP kinases and negatively regulates ERK2 and p38 MAP-kinases activity. The PTPN6 was shown to be involved in the regulation of T cell antigen receptor (TCR) signaling, which was thought to function through dephosphorylating the molecules related to MAP kinase pathway.
Form	50mM sodium phosphate, pH 7.0, 300mM NaCl, 150mM imidazole, 0.1mM PMSF, 0.25mM DTT, 25% glycerol.
Bio-activity	2500 nmol/min/mg
Molecular Mass	67 kDa
Purity	> 95%

 Tel: 1-631-559-9269 1-516-512-3133

 Email: info@creative-biomart.com  Fax: 1-631-938-8127

 45-1 Ramsey Road, Shirley, NY 11967, USA

Applications	Phosphatase Assay, Western Blot
Stability	1 year at -70 centigrade from the date of shipment.
Storage	Store product at -70 centigrade. For optimal storage, aliquot target into smaller quantities after centrifugation and store at recommended temperature. For most favorable performance, avoid repeated handling and multiple freeze/thaw cycles.

GENE INFORMATION

Gene Name	PTPN6 protein tyrosine phosphatase, non-receptor type 6 [Homo sapiens]
Official Symbol	PTPN6
Synonyms	PTPN6; protein tyrosine phosphatase, non-receptor type 6; tyrosine-protein phosphatase non-receptor type 6; HCP; HCPH; PTP 1C; SHP 1; SHP1; hematopoietic cell phosphatase; protein-tyrosine phosphatase 1C; protein-tyrosine phosphatase SHP-1; hematopoietic cell protein-tyrosine phosphatase; SHP-1; HPTP1C; PTP-1C; SHP-1L; SH-PTP1;
Gene ID	5777
mRNA Refseq	NM_080548
Protein Refseq	NP_536858
MIM	176883
UniProt ID	P29350
Chromosome	12p13.31

 Tel: 1-631-559-9269 1-516-512-3133

 Email: info@creative-biomart.com  Fax: 1-631-938-8127

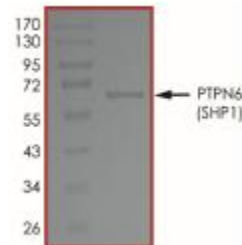
 45-1 Ramsey Road, Shirley, NY 11967, USA

Location
Pathway

Adaptive Immune System, organism-specific biosystem; Adherens junction, organism-specific biosystem; Adherens junction, conserved biosystem; B Cell Receptor Signaling Pathway, organism-specific biosystem; B cell receptor signaling pathway, organism-specific biosystem; B cell receptor signaling pathway, conserved biosystem; BCR signaling pathway, organism-specific biosystem;

Function

hydrolase activity; protein binding; protein kinase binding; protein tyrosine phosphatase activity; transmembrane receptor protein tyrosine phosphatase activity;



 Tel: 1-631-559-9269 1-516-512-3133

 Email: info@creative-biomart.com  Fax: 1-631-938-8127

 45-1 Ramsey Road, Shirley, NY 11967, USA