

Recombinant Full Length Human PTPRA Protein, C-Flag-tagged

Cat. No. PTPRA-2157HFL **Lot. No.** (See product label)

SPECIFICATION

Product Overview	Recombinant Full Length Human PTPRA Protein, fused to Flag-tag at C-terminus, was expressed in Mammalian cells.
Species	Human
Source	Mammalian Cells
Description	The protein encoded by this gene is a member of the protein tyrosine phosphatase (PTP) family. PTPs are known to be signaling molecules that regulate a variety of cellular processes including cell growth, differentiation, mitotic cycle, and oncogenic transformation. This PTP contains an extracellular domain, a single transmembrane segment and two tandem intracytoplasmic catalytic domains, and thus represents a receptor-type PTP. This PTP has been shown to dephosphorylate and activate Src family tyrosine kinases, and is implicated in the regulation of integrin signaling, cell adhesion and proliferation. Three alternatively spliced variants of this gene, which encode two distinct isoforms, have been reported.
Form	25 mM Tris HCl, pH 7.3, 100 mM glycine, 10% glycerol.
Molecular Mass	87.6 kDa
AA Sequence	MDSWFILVLLGSGLICVSANNATTVAPSVGITRLINSSTAEPVKEEAKTSNPTSSLTSL SVAPTFSPNIT LGPTYLTTVNSSDSDNGTTRTASTNSIGITISPNGTWLPDNQFTDAR TEPWEGNSSTAATTPETFPSPDE TPIIIVMVALSSLLVIVFIIIVLYMLRFKKYKQAGS

 Tel: 1-631-559-9269 1-516-512-3133

 Email: info@creative-biomart.com  Fax: 1-631-938-8127

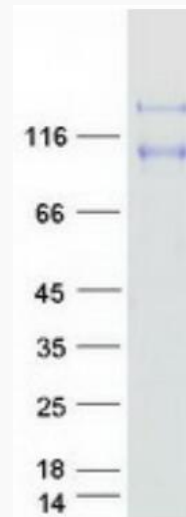
 45-1 Ramsey Road, Shirley, NY 11967, USA

HSNSFRLSNGRTEDVEPQSVPLLARSPSTNRKYP PLPVDKLEEEINRRMADDNKLF
 REEFNALPACPIQATCEAASKEENKEKNRYVNILPYDHSRVHLTPVEG VPDSYINA
 SFINGYQEKNKFIAAQGPKEETVNDFWRMIWEQNTATIVMVTNLKERKECKCAQYW
 PDQGC WTYGNIRVSVEDVTVLVDYTVRKFCIQVQVGDMTNRKPQRLITQFHFTSWP
 DFGVPFTPIGMLKFLKKVKA CNPQYAGAIVVHCSAGVGRTGTFVVIDAMLDMMHTE
 RKVDVYGVFSRIRAQRQCMVQTDMMQYVFIYQALL EHYLYGDTELEVTSLETHLQKIY
 NKIPGTSNNGLEEEFKKLSIKIQNDKMRTGNL PANMKKNRVLQIIP YEFNRV IIPVKR
 GEENTDYVNASFIDGYRQKDSYIASQGPLLHTIEDFWRMIWEWKSCSIVMLTELEER
 G QEKCAQYWPSDGLVSYGDITVELKKEEECESYTVRDLLVTNTRENKSRQIRQFHF
 HGWPEVGIPSDGKGM ISIIAAVQKQQQQSGNHPITVHCSAGAGRTGTFCALSTVLE
 RVKAEGILDVFQTVKSLRLQRPHMVQTLE QYEFCKYVQVEYIDAFSDYANFK TRTR
 PLEQKLISEEDLAANDILDYKDDDDKV

Purity	> 80% as determined by SDS-PAGE and Coomassie blue staining.
Stability	Stable for 12 months from the date of receipt of the product under proper storage and handling conditions. Avoid repeated freeze-thaw cycles.
Storage	Store at -80 centigrade.
Concentration	>50 ug/mL as determined by microplate BCA method.
Preparation	Recombinant protein was captured through anti-DDK affinity column followed by conventional chromatography steps.
Protein Families	Druggable Genome, Phosphatase, Transmembrane
Full Length	Full L.

GENE INFORMATION

Gene Name	PTPRA protein tyrosine phosphatase receptor type A [Homo sapiens (human)]
Official Symbol	PTPRA
Synonyms	LRP; HLPR; PTPA; HEPTP; HPTPA; RPTPA; PTPRL2; HPTPalpha; R-PTP-alpha
Gene ID	5786
mRNA Refseq	NM_080841.3
Protein Refseq	NP_543031.1
MIM	176884
UniProt ID	P18433



Coomassie blue staining of purified PTPRA protein.

 Tel: 1-631-559-9269 1-516-512-3133

 Email: info@creative-biomart.com  Fax: 1-631-938-8127

 45-1 Ramsey Road, Shirley, NY 11967, USA