

Recombinant Human PTPRA Protein, Myc/DDK-tagged, C13 and N15-labeled

Cat. No. PTPRA-6683H Lot. No. (See product label)

SPECIFICATION

Product Overview

PTPRA MS Standard C13 and N15-labeled recombinant protein (NP_543031) with a C-terminal MYC/DDK tag, was expressed in HEK293 cells.

Species

Human

Source

HEK293

Description

The protein encoded by this gene is a member of the protein tyrosine phosphatase (PTP) family. PTPs are known to be signaling molecules that regulate a variety of cellular processes including cell growth, differentiation, mitotic cycle, and oncogenic transformation. This PTP contains an extracellular domain, a single transmembrane segment and two tandem intracytoplasmic catalytic domains, and thus represents a receptor-type PTP. This PTP has been shown to dephosphorylate and activate Src family tyrosine kinases, and is implicated in the regulation of integrin signaling, cell adhesion and proliferation. Three alternatively spliced variants of this gene, which encode two distinct isoforms, have been reported.

Molecular Mass

89.7 kDa

AA Sequence

MDSWFILVLLGSGLICVSANNATTVAPSVGITRLINSSTAEPVKEEAKTSNPTSSLTSL
SVAPTFSPNITLGPTYLTTVNSSDSDNGTTRTASTNSIGITISPNGTWLPDNQFTDAR
TEPWEGNSSTAATTPETFPSPDETPIIIVMVALSSLLVIVFIIIVLYMLRFKYYKQAGSH
SNSFRLSNGRTEDVEPQSVPLLARSPSTNRKYPPLPVDKLEEEINRRMADDNKLFRE

 Tel: 1-631-559-9269 1-516-512-3133

 Email: info@creative-biomart.com  Fax: 1-631-938-8127

 45-1 Ramsey Road, Shirley, NY 11967, USA

EFNALPACPIQATCEAASKEENKEKNRYVNILPYDHSRVHLTPVEGV PDSYINASFI
 NGYQEKNKFIAAQGPKEETVNDFWRMIWEQNTATIVMVTNLKERKECKCAQYWPD
 QGCWTYGNIRVSVEDVTVLVDYTVRKFCIQQVGDMTNRKPQLITQFHFTSWPDFG
 VPFTPIGMLKFLKVKACNPQYAGAIVVHCSAGVGRTGTFFVIDAMLDMMHTEKVD
 VYGFVSRIRAQRQCMVQ TDMQYVFIYQALLEHYLYGDTELEVTSLETHLQKIYNKIPG
 TSNNGLEEEFKLTSIKIQNDKMRTGNLPANMKKNRVLQIIPYEFNRV IIPVKRGEENT
 DYVNASFIDGYRQKDSYIASQGPLLHTIEDFWRMIWEWKSCSIVMLTELEERGQEK
 AQYWPSDGLVSYGDITVELKKEEECESYTVRDLLVTNTRENKSRQIRQFHFGWPE
 VGIPSDGKGMISIIAAVQKQQQSGNHPITVHCSAGAGRTGTFCALSTVLERVKAEGI
 LDVFQTVKSLRLQRPHMVQTLEQYEFYCYKVVQEYIDAFSDYANFKTRTRPLEQKLIS
 EEDLAANDILDYKDDDDKV

Purity > 80% as determined by SDS-PAGE and Coomassie blue staining

Stability Stable for 3 months from receipt of products under proper storage and handling conditions.

Storage Store at -80 centigrade. Avoid repeated freeze-thaw cycles.

Concentration 50 µg/mL as determined by BCA

Storage Buffer 100 mM glycine, 25 mM Tris-HCl, pH 7.3.

GENE INFORMATION

Gene Name PTPRA protein tyrosine phosphatase receptor type A [Homo sapiens (human)]

Official Symbol PTPRA

Synonyms PTPRA; protein tyrosine phosphatase, receptor type, A; PTPA, PTPRL2; receptor-type tyrosine-protein phosphatase alpha; HLPR; HPTPA; LRP; RPTPA; PTPase-

 Tel: 1-631-559-9269 1-516-512-3133

 Email: info@creative-biomart.com  Fax: 1-631-938-8127

 45-1 Ramsey Road, Shirley, NY 11967, USA

alpha; PTPLCA-related phosphatase; tyrosine phosphatase alpha; protein-tyrosine phosphatase alpha; protein tyrosine phosphatase, receptor type, alpha polypeptide; Leukocyte common antigen-related peptide (protein tyrosine phosphate); PTPA; HEPTP; PTPRL2; HPTPalphalpha; R-PTP-alpha;

Gene ID 5786

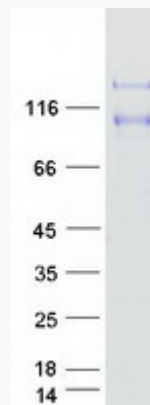
mRNA Refseq NM_080841

Protein Refseq NP_543031

MIM 176884

UniProt ID P18433

SDS-PAGE



 Tel: 1-631-559-9269 1-516-512-3133

 Email: info@creative-biomart.com  Fax: 1-631-938-8127

 45-1 Ramsey Road, Shirley, NY 11967, USA