

Recombinant Human PTPRC Protein, C-His-tagged

Cat. No. PTPRC-122H Lot. No. (See product label)

SPECIFICATION

Product Overview Recombinant Human PTPRC Protein with C-His tag was expressed in E. coli.

Species Human

Source E.coli

Description

The protein phosphatase (PTP) receptor CD45 is a type I transmembrane protein comprised of a pair of intracellular tyrosine phosphatase domains and a variable extracellular domain generated by alternative splicing. The catalytic activity of CD45 is a function of the first phosphatase domain (D1) while the second phosphatase domain (D2) may interact with and stabilize the first domain, or recruit/bind substrates. CD45 interacts directly with antigen receptor complex proteins or activates Src family kinases involved in the regulation of T- and B-cell antigen receptor signaling. Specifically, CD45 dephosphorylates Src-family kinases Lck and Fyn at their conserved negative regulatory carboxy-terminal tyrosine residues and upregulates kinase activity. Conversely, studies indicate that CD45 can also inhibit Lck and Fyn by dephosphorylating their positive regulatory autophosphorylation site. CD45 appears to be both a positive and a negative regulator that conducts signals depending on specific stimuli and cell type. Human leukocytes including lymphocytes, eosinophils, monocytes, basophils, and neutrophils express CD45, while erythrocytes and platelets are negative for CD45 expression.

Molecular Mass ~61 kDa

 Tel: 1-631-559-9269 1-516-512-3133

 Email: info@creative-biomart.com  Fax: 1-631-938-8127

 45-1 Ramsey Road, Shirley, NY 11967, USA

AA Sequence

QSPTPSPTGLTTAKMPSVPLSSDPLPHTHTAFSPASTFERENDFSETTTSLSPDNTS
 TQVSPDSLNASAFNTTGVSSVQTPHLPHTADSQTPSAGTDTQTFSGSAANAKLNP
 TPGSNAISDVPGERSTASTFPTDPVSPLTTTTLSLAHHSSAALPARTSNTTITANTSDA
 YLNASETTTTLSPSGSAVISTTTIATTPSKPTCDEKYANITVDYLYNKETKLFTAKLNVN
 ENVECGNNTCTNNEVHNLTECKNASVSISHNSCTAPDKTLILDVPPGVEKFQLHDCT
 QVEKADTTICLKWKNIETFTCDTQNITYRFQCGNMIFDNKEIKLENLEPEHEYKCDSEI
 LYNNHKFTNASKIIKTDGSPGEPQIIFCRSEAAHQGVITWNPPQRSFHNFTLCYIKET
 EKDCLNLDKNIKYLQNLKPYTKYVLSLHAYIIAKVQRNGSAAMCHFTTKSAPPSQV
 WNMTVSMTSDNSMHVKCRPPRDRNGPHERYHLEVEAGNTLVRNESHKNCDFRVK
 DLQYSTDYTFKAYFHNGDYPGEPFILHHSTSYNSK

Purity Transferred into competent cells and the supernatant was purified by NI column affinity chromatography and the purity is > 85% (by SDS-PAGE).

Notes For research use only, not for use in diagnostic procedure.

Storage Store at 4 centigrade short term. Aliquot and store at -20 centigrade long term. Avoid freeze-thaw cycles.

Concentration ≥0.5 mg/mL

Storage Buffer PBS, 4M Urea, pH7.4

GENE INFORMATION

Gene Name PTPRC protein tyrosine phosphatase, receptor type, C [Homo sapiens (human)]

Official Symbol PTPRC

Synonyms PTPRC; protein tyrosine phosphatase, receptor type, C; CD45; receptor-type tyrosine-protein phosphatase C; GP180; LCA; T200; CD45 antigen; T200

 Tel: 1-631-559-9269 1-516-512-3133

 Email: info@creative-biomart.com  Fax: 1-631-938-8127

 45-1 Ramsey Road, Shirley, NY 11967, USA

glycoprotein; leukocyte common antigen; leukocyte-common antigen; T200 leukocyte common antigen; protein tyrosine phosphatase, receptor type, c polypeptide; LY5; B220; L-CA; CD45R;

Gene ID [5788](#)

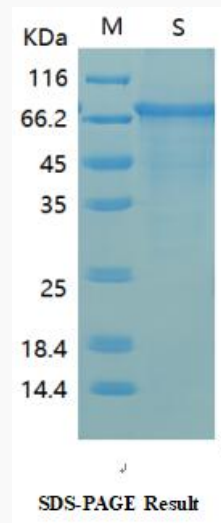
mRNA Refseq [NM_002838](#)

Protein Refseq [NP_002829](#)

MIM [151460](#)

UniProt ID [P08575](#)

SDS-PAGE



 Tel: 1-631-559-9269 1-516-512-3133

 Email: info@creative-biomart.com  Fax: 1-631-938-8127

 45-1 Ramsey Road, Shirley, NY 11967, USA