

## Recombinant Human PTPRC protein, hFc-tagged

Cat. No. PTPRC-1366H Lot. No. (See product label)

### SPECIFICATION

<b>Product Overview</b>	Recombinant Human PTPRC protein(P08575-3)(Gln26-Lys577), fused with C-terminal hFc tag, was expressed in HEK293.
<b>Species</b>	Human
<b>Source</b>	C-hFc
<b>ProteinLength</b>	Gln26-Lys577
<b>Tag</b>	C-hFc
<b>Form</b>	Supplied as 0.22µm filtered solution in PBS (pH 7.4).
<b>Bio-activity</b>	
<b>Molecular Mass</b>	The protein has a predicted MW of 87.53 kDa. Due to glycosylation, the protein migrates to 120-160 kDa based on Tris-Bis PAGE result.
<b>Endotoxin</b>	Less than 1EU per µg by the LAL method.
<b>Purity</b>	> 95% as determined by Tris-Bis PAGE; > 95% as determined by HPLC.
<b>Storage</b>	Valid for 12 months from date of receipt when stored at -80°C.;Recommend to aliquot the protein into smaller quantities for optimal storage. Please do not repeated freeze-thaw cycles.

 Tel: 1-631-559-9269 1-516-512-3133

 Email: [info@creative-biomart.com](mailto:info@creative-biomart.com)  Fax: 1-631-938-8127

 45-1 Ramsey Road, Shirley, NY 11967, USA

**Reconstitution** It is recommended that sterile water be added to the vial to prepare a stock solution of 0.2 ug/ul. Centrifuge the vial at 4°C before opening to recover the entire contents.

## GENE INFORMATION

**Gene Name** [PTPRC protein tyrosine phosphatase, receptor type, C \[ Homo sapiens \]](#)

**Official Symbol** [PTPRC](#)

**Synonyms** PTPRC; protein tyrosine phosphatase, receptor type, C; CD45; receptor-type tyrosine-protein phosphatase C; GP180; LCA; T200; CD45 antigen; T200 glycoprotein; leukocyte common antigen; leukocyte-common antigen; T200 leukocyte common antigen; protein tyrosine phosphatase, receptor type, c polypeptide; LY5; B220; L-CA; CD45R;

**Gene ID** [5788](#)

**mRNA Refseq** [NM\\_002838](#)

**Protein Refseq** [NP\\_002829](#)

**MIM** [151460](#)

**UniProt ID** [P08575](#)

 Tel: 1-631-559-9269 1-516-512-3133

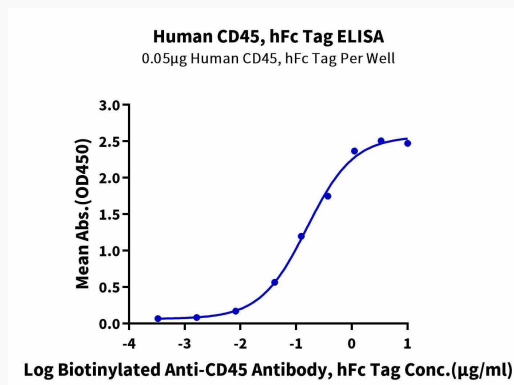
 Email: [info@creative-biomart.com](mailto:info@creative-biomart.com)  Fax: 1-631-938-8127

 45-1 Ramsey Road, Shirley, NY 11967, USA

**Tris-Bis PAGE**



**ELISA**



 Tel: 1-631-559-9269 1-516-512-3133

 Email: [info@creative-biomart.com](mailto:info@creative-biomart.com)  Fax: 1-631-938-8127

 45-1 Ramsey Road, Shirley, NY 11967, USA