

Recombinant Human PTPRC Protein (Gln26-Lys463), N-His tagged

Cat. No. PTPRC-1446H Lot. No. (See product label)

SPECIFICATION

Product Overview	Recombinant Human CD45/PTPRC (Gln26-Lys463) fused with the N-His tag was expressed in E. coli.
Species	Human
Source	E.coli
ProteinLength	Gln26-Lys463
Form	Lyophilized powder/frozen liquid
Molecular Mass	51.32 kDa
Purity	>90% as determined by SDS-PAGE.
Notes	For research use only.
Storage	Use a manual defrost freezer and avoid repeated freeze thaw cycles. Store at 2 to 8 centigrade for one week. Store at -20 to -80 centigrade for twelve months from the date of receipt.
Storage Buffer	0.01M PBS, pH 7.4, 0.02% NLS
Reconstitution	Reconstitute in sterile water for a stock solution.

 Tel: 1-631-559-9269 1-516-512-3133

 Email: info@creative-biomart.com  Fax: 1-631-938-8127

 45-1 Ramsey Road, Shirley, NY 11967, USA

Shipping They are shipped out with dry ice/blue ice unless customers require otherwise.

GENE INFORMATION

Gene Name PTPRC protein tyrosine phosphatase, receptor type, C [Homo sapiens (human)]

Official Symbol PTPRC

Synonyms PTPRC; protein tyrosine phosphatase, receptor type, C; CD45; receptor-type tyrosine-protein phosphatase C; GP180; LCA; T200; CD45 antigen; T200 glycoprotein; leukocyte common antigen; leukocyte-common antigen; T200 leukocyte common antigen; protein tyrosine phosphatase, receptor type, c polypeptide; LY5; B220; L-CA; CD45R;

Gene ID 5788

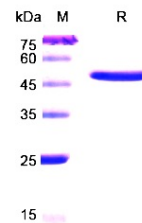
mRNA Refseq NM_002838

Protein Refseq NP_002829

MIM 151460

UniProt ID P08575

SDS-PAGE



 Tel: 1-631-559-9269 1-516-512-3133

 Email: info@creative-biomart.com  Fax: 1-631-938-8127

 45-1 Ramsey Road, Shirley, NY 11967, USA