

## Active Recombinant Human PTPRC, Fc-tagged

Cat. No. PTPRC-230H Lot. No. (See product label)

### SPECIFICATION

<b>Product Overview</b>	Active Recombinant Human PTPRC(NP_563578.1) (Met 1-Lys 414) was expressed in Human Cells, fused with the Fc region of human IgG1 at the C-terminus.
<b>Species</b>	Human
<b>Source</b>	Human Cells
<b>ProteinLength</b>	1-414 aa
<b>Form</b>	Lyophilized from sterile PBS, pH 7.4.
<b>Bio-activity</b>	Measured by its ability to bind biotinylated human Galectin-1 in a functional ELISA.
<b>Molecular Mass</b>	The recombinant mature human CD45/Fc chimeric protein consists of 629 amino acids and has a calculated molecular mass of 71.1 kDa. In SDS-PAGE under reducing conditions, the apparent molecular mass of rhCD45/Fc monomer is approximately 125-135 kDa due to glycosylation.
<b>Endotoxin</b>	< 1.0 EU per µg of the protein as determined by the LAL method.
<b>Purity</b>	> 95 % as determined by SDS-PAGE
<b>Storage</b>	Store it under sterile conditions at -20°C to -80°C upon receiving. Recommend to aliquot the protein into smaller quantities for optimal storage. Avoid repeated freeze-thaw cycles.

 Tel: 1-631-559-9269 1-516-512-3133

 Email: [info@creative-biomart.com](mailto:info@creative-biomart.com)  Fax: 1-631-938-8127

 45-1 Ramsey Road, Shirley, NY 11967, USA

**Reconstitution** It is recommended that sterile water be added to the vial to prepare a stock solution of 0.2 ug/ul. Centrifuge the vial at 4°C before opening to recover the entire contents.

## GENE INFORMATION

**Gene Name** [PTPRC protein tyrosine phosphatase, receptor type, C \[ Homo sapiens \]](#)

**Official Symbol** [PTPRC](#)

**Synonyms** PTPRC; protein tyrosine phosphatase, receptor type, C; CD45; receptor-type tyrosine-protein phosphatase C; GP180; LCA; T200; CD45 antigen; T200 glycoprotein; leukocyte common antigen; leukocyte-common antigen; T200 leukocyte common antigen; protein tyrosine phosphatase, receptor type, c polypeptide; LY5; B220; L-CA; CD45R;

**Gene ID** [5788](#)

**mRNA Refseq** [NM\\_002838](#)

**Protein Refseq** [NP\\_002829](#)

**MIM** [151460](#)

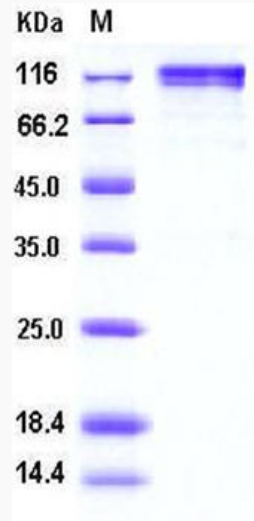
**UniProt ID** [P08575](#)

 Tel: 1-631-559-9269 1-516-512-3133

 Email: [info@creative-biomart.com](mailto:info@creative-biomart.com)  Fax: 1-631-938-8127

 45-1 Ramsey Road, Shirley, NY 11967, USA

**SDS-PAGE**



 Tel: 1-631-559-9269 1-516-512-3133

 Email: [info@creative-biomart.com](mailto:info@creative-biomart.com)  Fax: 1-631-938-8127

 45-1 Ramsey Road, Shirley, NY 11967, USA