

## Active Recombinant Human PTPRC Protein, Fc-tagged

Cat. No. PTPRC-442H Lot. No. (See product label)

### SPECIFICATION

<b>Product Overview</b>	Human CD45RO (Gln24-Lys391) with Human IgG1 (Pro100-Lys330) Fc tag at C-terminus was expressed in Chinese Hamster Ovary cell line
<b>Species</b>	Human
<b>Source</b>	CHO
<b>ProteinLength</b>	24-391 a.a.
<b>Description</b>	<p>The protein encoded by this gene is a member of the protein tyrosine phosphatase (PTP) family. PTPs are known to be signaling molecules that regulate a variety of cellular processes including cell growth, differentiation, mitosis, and oncogenic transformation. This PTP contains an extracellular domain, a single transmembrane segment and two tandem intracytoplasmic catalytic domains, and thus is classified as a receptor type PTP. This PTP has been shown to be an essential regulator of T- and B-cell antigen receptor signaling. It functions through either direct interaction with components of the antigen receptor complexes, or by activating various Src family kinases required for the antigen receptor signaling. This PTP also suppresses JAK kinases, and thus functions as a regulator of cytokine receptor signaling. Alternatively spliced transcripts variants of this gene, which encode distinct isoforms, have been reported.</p>
<b>Bio-activity</b>	Measured by its binding ability in a functional ELISA. When Recombinant Human CD45RO is immobilized at 2 µg/mL (100 µL/well), the concentration of Recombinant

 Tel: 1-631-559-9269 1-516-512-3133

 Email: [info@creative-biomart.com](mailto:info@creative-biomart.com)  Fax: 1-631-938-8127

 45-1 Ramsey Road, Shirley, NY 11967, USA

	Human Galectin-1 Protein that produces a 50% optimal binding response is found to be 100-500 ng/mL.
<b>Molecular Mass</b>	Predicted Molecular Mass: 71 kDa SDS-PAGE: 114-132 kDa, under reducing conditions
<b>Endotoxin</b>	<0.10 EU per 1 µg of the protein by the LAL method.
<b>Purity</b>	>95%, by SDS-PAGE visualized with Silver Staining and quantitative densitometry by Coomassie® Blue Staining.
<b>Storage</b>	Use a manual defrost freezer and avoid repeated freeze-thaw cycles. 12 months from date of receipt, -20 to -70 centigrade as supplied. 1 month, 2 to 8 centigrade under sterile conditions after reconstitution. 3 months, -20 to -70 centigrade under sterile conditions after reconstitution.
<b>Storage Buffer</b>	Lyophilized from a 0.2 µm filtered solution in PBS.
<b>Reconstitution</b>	Reconstitute at 250 µg/mL in PBS.
<b>Shipping</b>	The product is shipped at ambient temperature.

## GENE INFORMATION

<b>Gene Name</b>	PTPRC protein tyrosine phosphatase receptor type C [ Homo sapiens (human) ]
<b>Official Symbol</b>	PTPRC
<b>Synonyms</b>	PTPRC; protein tyrosine phosphatase receptor type C; LCA; LY5; B220; CD45; L-CA; T200; CD45R; GP180; IMD105; receptor-type tyrosine-protein phosphatase C; CD45 antigen; T200 glycoprotein; T200 leukocyte common antigen; protein tyrosine

 Tel: 1-631-559-9269 1-516-512-3133

 Email: [info@creative-biomart.com](mailto:info@creative-biomart.com)  Fax: 1-631-938-8127

 45-1 Ramsey Road, Shirley, NY 11967, USA

phosphatase, receptor type, c polypeptide; EC 3.1.3.48

**Gene ID** [5788](#)

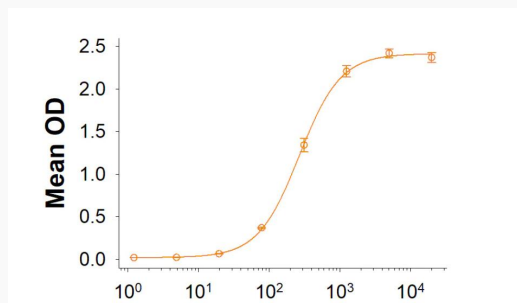
**mRNA Refseq** [NM\\_002838](#)

**Protein Refseq** [NP\\_002829](#)

**MIM** [151460](#)

**UniProt ID** [P08575](#)

**Recombinant Human  
CD45RO Fc Chimera  
Protein Binding  
Activity**



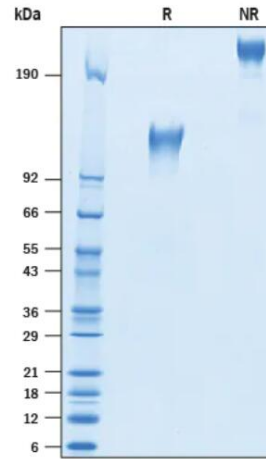
When Recombinant Human CD45RO is immobilized at 2 µg/mL (100 µL/well), the concentration of Recombinant Human Galectin-1 Protein that produces a 50% optimal binding response is found to be 100-500 ng/mL.

 Tel: 1-631-559-9269 1-516-512-3133

 Email: [info@creative-biomart.com](mailto:info@creative-biomart.com)  Fax: 1-631-938-8127

 45-1 Ramsey Road, Shirley, NY 11967, USA

**Recombinant Human  
CD45RO Fc Chimera  
Protein SDS-PAGE.**



2 µg/lane of Recombinant Human CD45RO Fc Chimera Protein was resolved with SDS-PAGE under reducing (R) and non-reducing (NR) conditions and visualized by Coomassie® Blue staining, showing bands at 114-132 kDa and 228-264 kDa, respectively.

 Tel: 1-631-559-9269 1-516-512-3133

 Email: [info@creative-biomart.com](mailto:info@creative-biomart.com)  Fax: 1-631-938-8127

 45-1 Ramsey Road, Shirley, NY 11967, USA