

Recombinant Human PTPRC Protein (Met1-Lys575), C-His tagged

Cat. No. PTPRC-5047H Lot. No. (See product label)

SPECIFICATION

Product Overview	Recombinant human PTPRC (Met1-Lys575) fused with the C-terminal His tag was expressed in Mammalian cells.
Species	Human
Source	Mammalian Cells
ProteinLength	Met1-Lys575
Form	Lyophilized powder/frozen liquid
Molecular Mass	63.36 kDa
Endotoxin	< 1.0 EU/μg of the protein as determined by the LAL method.
Purity	>90% as determined by SDS-PAGE.
Notes	For research use only.
Storage	Use a manual defrost freezer and avoid repeated freeze thaw cycles. Store at 2 to 8 centigrade for one week. Store at -20 to -80 centigrade for twelve months from the date of receipt.
Storage Buffer	Supplied as solution form in PBS or lyophilized from PBS.

 Tel: 1-631-559-9269 1-516-512-3133

 Email: info@creative-biomart.com  Fax: 1-631-938-8127

 45-1 Ramsey Road, Shirley, NY 11967, USA

Reconstitution Reconstitute in sterile water for a stock solution.

Shipping They are shipped out with dry ice/blue ice unless customers require otherwise.

GENE INFORMATION

Gene Name [PTPRC protein tyrosine phosphatase, receptor type, C \[Homo sapiens \(human\) \]](#)

Official Symbol [PTPRC](#)

Synonyms PTPRC; protein tyrosine phosphatase, receptor type, C; CD45; receptor-type tyrosine-protein phosphatase C; GP180; LCA; T200; CD45 antigen; T200 glycoprotein; leukocyte common antigen; leukocyte-common antigen; T200 leukocyte common antigen; protein tyrosine phosphatase, receptor type, c polypeptide; LY5; B220; L-CA; CD45R;

Gene ID [5788](#)

mRNA Refseq [NM_002838](#)

Protein Refseq [NP_002829](#)

MIM [151460](#)

UniProt ID [P08575](#)

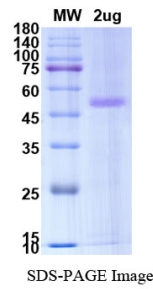
 Tel: 1-631-559-9269 1-516-512-3133

 Email: info@creative-biomart.com  Fax: 1-631-938-8127

 45-1 Ramsey Road, Shirley, NY 11967, USA



SDS-PAGE



Tel: 1-631-559-9269 1-516-512-3133

Email: info@creative-biomart.com Fax: 1-631-938-8127

45-1 Ramsey Road, Shirley, NY 11967, USA