

Recombinant Human PTPRC protein, His-tagged

Cat. No. PTPRC-5506H Lot. No. (See product label)

SPECIFICATION

Product Overview	Recombinant Human PTPRC protein(P08575)(24-575aa), fused to N-terminal His tag, was expressed in Yeast.
Species	Human
Source	Yeast
ProteinLength	24-575aa
Form	If the delivery form is liquid, the default storage buffer is Tris/PBS-based buffer, 5%-50% glycerol. If the delivery form is lyophilized powder, the buffer before lyophilization is Tris/PBS-based buffer, 6% Trehalose, pH 8.0.
Molecular Mass	62.8 kDa
Purity	Greater than 90% as determined by SDS-PAGE.
Storage	Store at -20°C/-80°C upon receipt, aliquoting is necessary for mutiple use. Avoid repeated freeze-thaw cycles.
Reconstitution	Please reconstitute protein in deionized sterile water to a concentration of 0.1-1.0 mg/mL. We recommend to add 5-50% of glycerol (final concentration) and aliquot for long-term storage at -20°C/-80°C. Our default final concentration of glycerol is 50%.

GENE INFORMATION

 Tel: 1-631-559-9269 1-516-512-3133

 Email: info@creative-biomart.com  Fax: 1-631-938-8127

 45-1 Ramsey Road, Shirley, NY 11967, USA

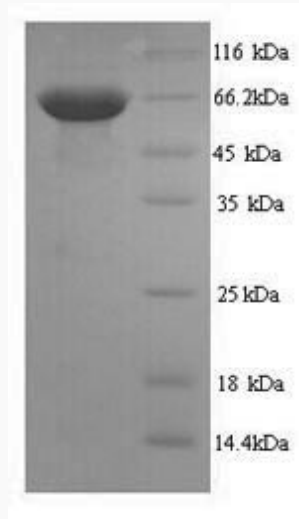
Gene Name	PTPRC protein tyrosine phosphatase, receptor type, C [Homo sapiens]
Official Symbol	PTPRC
Synonyms	PTPRC; protein tyrosine phosphatase, receptor type, C; CD45; receptor-type tyrosine-protein phosphatase C; GP180; LCA; T200; CD45 antigen; T200 glycoprotein; leukocyte common antigen; leukocyte-common antigen; T200 leukocyte common antigen; protein tyrosine phosphatase, receptor type, c polypeptide; LY5; B220; L-CA; CD45R;
Gene ID	5788
mRNA Refseq	NM_002838
Protein Refseq	NP_002829
MIM	151460
UniProt ID	P08575

 Tel: 1-631-559-9269 1-516-512-3133

 Email: info@creative-biomart.com  Fax: 1-631-938-8127

 45-1 Ramsey Road, Shirley, NY 11967, USA

SDS-PAGE



 Tel: 1-631-559-9269 1-516-512-3133

 Email: info@creative-biomart.com  Fax: 1-631-938-8127

 45-1 Ramsey Road, Shirley, NY 11967, USA