

Recombinant Human PTPRC Protein, His-tagged

Cat. No. PTPRC-730H Lot. No. (See product label)

SPECIFICATION

Product Overview	Recombinant Human PTPRC Protein (Gln26-Lys463) with His tag was expressed in E. coli.
Species	Human
Source	E.coli
ProteinLength	Gln26-Lys463
Description	<p>The protein encoded by this gene is a member of the protein tyrosine phosphatase (PTP) family. PTPs are known to be signaling molecules that regulate a variety of cellular processes including cell growth, differentiation, mitosis, and oncogenic transformation. This PTP contains an extracellular domain, a single transmembrane segment and two tandem intracytoplasmic catalytic domains, and thus is classified as a receptor type PTP. This PTP has been shown to be an essential regulator of T- and B-cell antigen receptor signaling. It functions through either direct interaction with components of the antigen receptor complexes, or by activating various Src family kinases required for the antigen receptor signaling. This PTP also suppresses JAK kinases, and thus functions as a regulator of cytokine receptor signaling. Alternatively spliced transcripts variants of this gene, which encode distinct isoforms, have been reported.</p>
Form	Freeze-dried powder
Molecular Mass	Predicted Molecular Mass: 52.7 kDa; Accurate Molecular Mass: 59 kDa

 Tel: 1-631-559-9269 1-516-512-3133

 Email: info@creative-biomart.com  Fax: 1-631-938-8127

 45-1 Ramsey Road, Shirley, NY 11967, USA

Purity	> 90%
Applications	Positive Control; Immunogen; SDS-PAGE; WB.
Stability	The thermal stability is described by the loss rate. The loss rate was determined by accelerated thermal degradation test, that is, incubate the protein at 37 centigrade for 48h, and no obvious degradation and precipitation were observed. The loss rate is less than 5% within the expiration date under appropriate storage condition.
Storage	Avoid repeated freeze/thaw cycles. Store at 2-8 centigrade for one month. Aliquot and store at -80 centigrade for 12 months.
Storage Buffer	PBS, pH7.4, containing 0.01% SKL, 1mM DTT, 5% Trehalose and Proclin300.
Reconstitution	Reconstitute in 20mM Tris, 150mM NaCl (pH8.0) to a concentration of 0.1-1.0 mg/mL. Do not vortex.

GENE INFORMATION

Gene Name	PTPRC protein tyrosine phosphatase receptor type C [Homo sapiens (human)]
Official Symbol	PTPRC
Synonyms	PTPRC; protein tyrosine phosphatase receptor type C; LCA; LY5; B220; CD45; L-CA; T200; CD45R; GP180; receptor-type tyrosine-protein phosphatase C; CD45 antigen; T200 glycoprotein; T200 leukocyte common antigen; protein tyrosine phosphatase, receptor type, c polypeptide; NP_001254727.1; EC 3.1.3.48
Gene ID	5788
mRNA Refseq	NM_002838

 Tel: 1-631-559-9269 1-516-512-3133

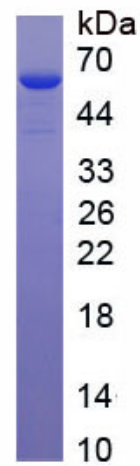
 Email: info@creative-biomart.com  Fax: 1-631-938-8127

 45-1 Ramsey Road, Shirley, NY 11967, USA

Protein Refseq NP_002829

MIM 151460

UniProt ID P08575



Tel: 1-631-559-9269 1-516-512-3133

Email: info@creative-biomart.com Fax: 1-631-938-8127

45-1 Ramsey Road, Shirley, NY 11967, USA