

Recombinant Human PTPRD protein, His-tagged

Cat. No. PTPRD-36H Lot. No. (See product label)

SPECIFICATION

Product Overview	Recombinant Human PTPRD protein (Glu21-Glu1265), fused to His tag at C-terminus, was expressed in human 293 cells (HEK293).
Species	Human
Source	HEK293
ProteinLength	1245
Description	<p>Receptor-type tyrosine-protein phosphatase delta is an enzyme that is encoded by the PTPRD gene. The protein encoded by this gene is a member of the protein tyrosine phosphatase (PTP) family. PTPs are known to be signaling molecules that regulate a variety of cellular processes including cell growth, differentiation, mitotic cycle, and oncogenic transformation. PTPRD has been shown to interact with PTPRS and liprin-alpha-1. Studies of the similar genes in chick and fly suggest the role of this PTP is in promoting neurite growth, and regulating neurons axon guidance. Multiple tissue specific alternatively spliced transcript variants of this gene have been reported. Mutations in the PTPRD gene are associated with autism, obsessive-compulsive disorder, and breast cancer.</p>
Form	Lyophilized from 0.22 um filtered solution in PBS, pH7.4, 10% trehalose.
Molecular Mass	The protein has a calculated MW of 140 kDa. The protein migrates as 19 kDa and 120-130 kDa under reducing (R) condition (SDS-PAGE).

 Tel: 1-631-559-9269 1-516-512-3133

 Email: info@creative-biomart.com  Fax: 1-631-938-8127

 45-1 Ramsey Road, Shirley, NY 11967, USA

Endotoxin	Less than 1.0 EU per ug by the LAL method.
Purity	>90% as determined by SDS-PAGE.
Storage	<p>For long term storage, the product should be stored at lyophilized state at -20 centigrade or lower.</p> <p>Please avoid repeated freeze-thaw cycles.</p> <p>This product is stable after storage at:</p> <p>-20 centigrade to -70 centigrade for 12 months in lyophilized state; -70 centigrade for 3 months under sterile conditions after reconstitution.</p>
Reconstitution	It is recommended that sterile water be added to the vial to prepare a stock solution of 0.2 ug/ul. Centrifuge the vial at 4°C before opening to recover the entire contents.

GENE INFORMATION

Gene Name	PTPRD
Official Symbol	PTPRD
Synonyms	PTPRD; protein tyrosine phosphatase, receptor type, D; receptor-type tyrosine-protein phosphatase delta; HPTP; PTPD; R-PTP-delta; protein-tyrosine phosphatase delta; protein tyrosine phosphatase, receptor type, delta polypeptide; HPTPD; HPTPDELTA; RTPDELTA; MGC119750; MGC119751; MGC119752; MGC119753
Gene ID	5789
mRNA Refseq	NM_001040712
Protein Refseq	NP_001035802

 Tel: 1-631-559-9269 1-516-512-3133

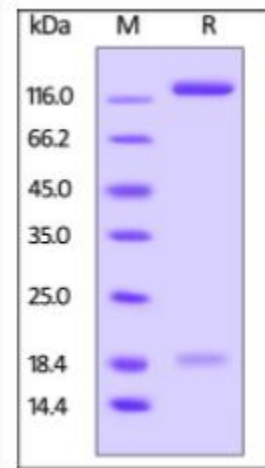
 Email: info@creative-biomart.com  Fax: 1-631-938-8127

 45-1 Ramsey Road, Shirley, NY 11967, USA

MIM 601598

UniProt ID P23468

**SDS-PAGE of
PTPRD-36H**



Human PTPRD, His Tag on SDS-PAGE under reducing (R) condition. The gel was stained overnight with Coomassie Blue. The purity of the protein is greater than 90%.

Tel: 1-631-559-9269 1-516-512-3133

Email: info@creative-biomart.com Fax: 1-631-938-8127

45-1 Ramsey Road, Shirley, NY 11967, USA