

Recombinant Human PTPRE Protein, Myc/DDK-tagged, C13 and N15-labeled

Cat. No. PTPRE-3685H **Lot. No.** (See product label)

SPECIFICATION

Product Overview

PTPRE MS Standard C13 and N15-labeled recombinant protein (NP_569119) with a C-terminal MYC/DDK tag, was expressed in HEK293 cells.

Species

Human

Source

HEK293

Description

The protein encoded by this gene is a member of the protein tyrosine phosphatase (PTP) family. PTPs are known to be signaling molecules that regulate a variety of cellular processes including cell growth, differentiation, mitotic cycle, and oncogenic transformation. Several alternatively spliced transcript variants of this gene have been reported, at least two of which encode a receptor-type PTP that possesses a short extracellular domain, a single transmembrane region, and two tandem intracytoplasmic catalytic domains; another one encodes a PTP that contains a distinct hydrophilic N-terminus, and thus represents a nonreceptor-type isoform of this PTP. Studies of the similar gene in mice suggested the regulatory roles of this PTP in RAS related signal transduction pathways, cytokine-induced SATA signaling, as well as the activation of voltage-gated K⁺ channels.

Molecular Mass

74.4 kDa

AA Sequence

MSNRSSFRLTWFRKQRKAVVSTSDKKMPNGILEEQEQQRVMLLSRSPSGPKKYF
PIPVEHLEEEIRIRSADDCKQFREEFNSLPSGHIQGTFFELANKEENREKNRYPNILPN

 Tel: 1-631-559-9269 1-516-512-3133

 Email: info@creative-biomart.com  Fax: 1-631-938-8127

 45-1 Ramsey Road, Shirley, NY 11967, USA

DHSRVILSQLDGIPCSDYINASYIDGYKEKNKFIAAQGPKQETVNDFWRMVWEQKSA
 TIVMLTNLKERKEEKCHQYWPDQGCWTYGNIRVCVEDCVVLVDYTIKFCIQPQLPD
 GCKAPRLVSQLHFTSWPDFGVFPFTPIGMLKFLKVKTLNPNVHAGPIVVHCSAGVGRT
 GTFIVIDAMMAMMHAEQKVDVFEFVSRIRNQRPMVQTDQMYYTFIYQALLEYYLYG
 DTELDVSSLEKHLQTMHGTTTHFDKIGLEEEFRKLTNVRIMKENMRTGNLPANMKKA
 RVIQIIPYDFNRVILSMKRGQEYTDYINASFIDGYRQKDYFIATQGPLAHTVEDFWRMI
 WEWKSHTIVMLTEVQEREQDKCYQYWPTEGSVTHGEITIEIKNDTLSEAISIRDFLVT
 LNQPQARQEEQVRVVRQFHFGWPEIGIPAEGKGMIDLIAAVQKQQQQTGNHPITV
 HCSAGAGRTGTFIALSNILERVKAEGLLDVFQAVKSLRLQRPHMVQTLEQYEFQYKV
 VQDFIDIFSDYANFKTRTRPLEQKLISEEDLAANDILDYKDDDDKV

Purity > 80% as determined by SDS-PAGE and Coomassie blue staining

Stability Stable for 3 months from receipt of products under proper storage and handling conditions.

Storage Store at -80 centigrade. Avoid repeated freeze-thaw cycles.

Concentration 50 µg/mL as determined by BCA

Storage Buffer 100 mM glycine, 25 mM Tris-HCl, pH 7.3.

GENE INFORMATION

Gene Name PTPRE protein tyrosine phosphatase receptor type E [Homo sapiens (human)]

Official Symbol PTPRE

Synonyms PTPRE; protein tyrosine phosphatase, receptor type, E; receptor-type tyrosine-protein phosphatase epsilon; PTPE; protein tyrosine phosphatase, receptor type, epsilon polypeptide; HPTPE; FLJ57799; FLJ58245; R-PTP-EPSILON; DKFZp313F1310;

 Tel: 1-631-559-9269 1-516-512-3133

 Email: info@creative-biomart.com  Fax: 1-631-938-8127

 45-1 Ramsey Road, Shirley, NY 11967, USA

Gene ID 5791

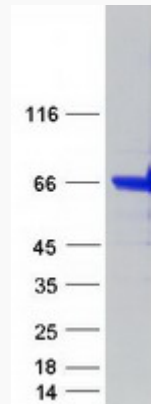
mRNA Refseq NM_130435

Protein Refseq NP_569119

MIM 600926

UniProt ID P23469

SDS-PAGE



 Tel: 1-631-559-9269 1-516-512-3133

 Email: info@creative-biomart.com  Fax: 1-631-938-8127

 45-1 Ramsey Road, Shirley, NY 11967, USA