

Recombinant Human PTPRF Protein, His-tagged

Cat. No. PTPRF-463H Lot. No. (See product label)

SPECIFICATION

Product Overview	Recombinant Human PTPRF(Asp30~Tyr224) fused with His tag at N-terminal was expressed in E. coli.
Species	Human
Source	E.coli
ProteinLength	Asp30~Tyr224
Description	<p>The protein encoded by this gene is a member of the protein tyrosine phosphatase (PTP) family. PTPs are known to be signaling molecules that regulate a variety of cellular processes including cell growth, differentiation, mitotic cycle, and oncogenic transformation. This PTP possesses an extracellular region, a single transmembrane region, and two tandem intracytoplasmic catalytic domains, and thus represents a receptor-type PTP. The extracellular region contains three Ig-like domains, and nine non-Ig like domains similar to that of neural-cell adhesion molecule. This PTP was shown to function in the regulation of epithelial cell-cell contacts at adherents junctions, as well as in the control of beta-catenin signaling. An increased expression level of this protein was found in the insulin-responsive tissue of obese, insulin-resistant individuals, and may contribute to the pathogenesis of insulin resistance. Two alternatively spliced transcript variants of this gene, which encode distinct proteins, have been reported.</p>
Form	20mM Tris, 150mM NaCl, pH8.0, containing 1mM EDTA, 1mM DTT, 0.01% SKL, 5%

 Tel: 1-631-559-9269 1-516-512-3133

 Email: info@creative-biomart.com  Fax: 1-631-938-8127

 45-1 Ramsey Road, Shirley, NY 11967, USA

	Trehalose and Proclin300.
Molecular Mass	24.8kDa
Endotoxin	<1.0EU per 1ug (determined by the LAL method)
Purity	> 97%
Applications	Positive Control; Immunogen; SDS-PAGE; WB. If bio-activity of the protein is needed, please check active protein
Stability	The thermal stability is described by the loss rate. The loss rate was determined by accelerated thermal degradation test, that is, incubate the protein at 37 centigrade for 48h, and no obvious degradation and precipitation were observed. The loss rate is less than 5% within the expiration date under appropriate storage condition.
Storage	Avoid repeated freeze/thaw cycles. Store at 2-8 centigrade for one month. Aliquot and store at -80 centigrade for 12 months.
Reconstitution	Reconstitute in 20mM Tris, 150mM NaCl (pH8.0) to a concentration of 0.1-1.0 mg/mL. Do not vortex.

GENE INFORMATION

Gene Name	PTPRF protein tyrosine phosphatase, receptor type, F [Homo sapiens]
Official Symbol	PTPRF
Synonyms	PTPRF; protein tyrosine phosphatase, receptor type, F; LAR; receptor-type tyrosine-protein phosphatase F; LCA-homolog; leukocyte common antigen related; leukocyte antigen-related (LAR) PTP receptor; leukocyte antigen-related tyrosine phosphatase;

 Tel: 1-631-559-9269 1-516-512-3133

 Email: info@creative-biomart.com  Fax: 1-631-938-8127

 45-1 Ramsey Road, Shirley, NY 11967, USA

receptor-linked protein-tyrosine phosphatase LAR; protein tyrosine phosphatase, receptor type, F polypeptide; FLJ43335; FLJ45062; FLJ45567;

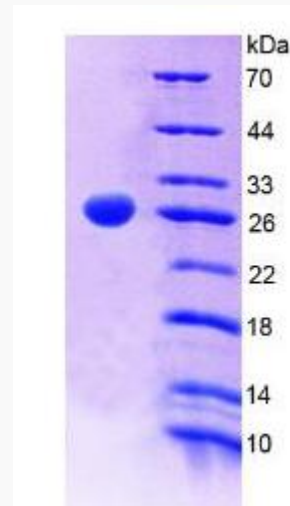
Gene ID 5792

mRNA Refseq NM_002840

Protein Refseq NP_002831

MIM 179590

UniProt ID P10586



 Tel: 1-631-559-9269 1-516-512-3133

 Email: info@creative-biomart.com  Fax: 1-631-938-8127

 45-1 Ramsey Road, Shirley, NY 11967, USA