

## Recombinant Human PTPRF, GST-tagged, Active

Cat. No. PTPRF-469H Lot. No. (See product label)

### SPECIFICATION

**Product Overview** Recombinant human PTPRF (1275-1897) was expressed in *E. Coli* using an N-terminal GST tag. MW=93kDa.

**Species** Human

**Source** E.coli

**Protein Length** 1275-1897 a.a.

**Description** PTPRF or LAR is a member of the protein tyrosine phosphatase family with an extracellular region, a single transmembrane region, and two tandem intracytoplasmic catalytic domains. PTPRF has been shown to function in the regulation of epithelial cell-cell contacts at adherents junctions as well as in the control of beta-catenin signaling. An increased expression level of this protein was found in the insulin-responsive tissue of obese, insulin-resistant individuals, and may contribute to the pathogenesis of insulin resistance.

**Sequence** 1275-1897.

**Applications** Kinase Assay, Western Blot.

**Storage And Stability** Store product at  $-70^{\circ}\text{C}$ . For optimal storage, aliquot target into smaller quantities after centrifugation and store at recommended temperature. For most favorable performance, avoid repeated handling and multiple freeze/thaw cycles.

 Tel: 1-631-559-9269 1-516-512-3133

 Email: [info@creative-biomart.com](mailto:info@creative-biomart.com)  Fax: 1-631-938-8127

 45-1 Ramsey Road, Shirley, NY 11967, USA

22q13.33

1p34

## GENE INFORMATION

**Gene Name**

PTPRF protein tyrosine phosphatase, receptor type, F [ Homo sapiens ]

**Synonyms**

PTPRF; protein tyrosine phosphatase, receptor type, F; LCA-homolog; OTTHUMP00000008683; OTTHUMP00000008684; leukocyte antigen-related (LAR) PTP receptor; leukocyte antigen-related tyrosine phosphatase; protein tyrosine phosphatase, receptor type, F polypeptide; receptor-linked protein-tyrosine phosphatase LAR; LAR; FLJ43335; FLJ45062; FLJ45567; EC 3.1.3.48

**Gene ID**

5792

**mRNA Refseq**

NM\_002840

**Protein Refseq**

NP\_002831

**MIM**

179590

**UniProt ID**

P10586

**Pathway**

Adherens junction; Cell adhesion molecules (CAMs); Insulin signaling pathway

**Function**

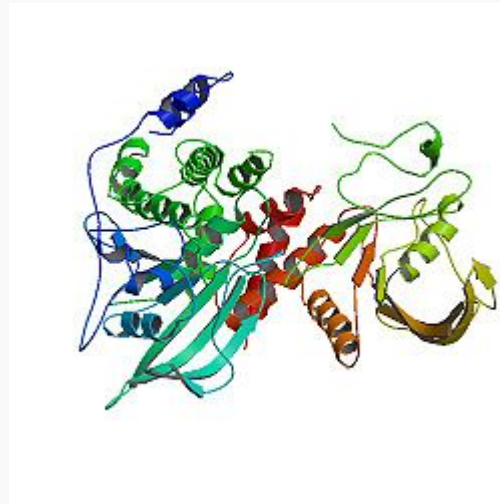
heparan sulfate proteoglycan binding; heparin binding; hydrolase activit; protein binding; protein kinase binding; transmembrane receptor protein tyrosine phosphatase activity

 Tel: 1-631-559-9269 1-516-512-3133

 Email: [info@creative-biomart.com](mailto:info@creative-biomart.com)  Fax: 1-631-938-8127

 45-1 Ramsey Road, Shirley, NY 11967, USA

PDB rendering based  
on 1lar.



 Tel: 1-631-559-9269 1-516-512-3133

 Email: [info@creative-biomart.com](mailto:info@creative-biomart.com)  Fax: 1-631-938-8127

 45-1 Ramsey Road, Shirley, NY 11967, USA