

Recombinant Human PTPRK Protein, Myc/DDK-tagged, C13 and N15-labeled

Cat. No. PTPRK-5497H **Lot. No.** (See product label)

SPECIFICATION

Product Overview	PTPRK MS Standard C13 and N15-labeled recombinant protein (NP_001129120) with a C-terminal MYC/DDK tag, was expressed in HEK293 cells.
Species	Human
Source	HEK293
Description	<p>The protein encoded by this gene is a member of the protein tyrosine phosphatase (PTP) family. PTPs are known to be signaling molecules that regulate a variety of cellular processes including cell growth, differentiation, mitotic cycle, and oncogenic transformation. This PTP possesses an extracellular region, a single transmembrane region, and two tandem catalytic domains, and thus represents a receptor-type PTP. The extracellular region contains a meprin-A5 antigen-PTP mu (MAM) domain, an Ig-like domain and four fibronectin type III-like repeats. This PTP was shown to mediate homophilic intercellular interaction, possibly through the interaction with beta- and gamma-catenin at adherens junctions. Expression of this gene was found to be stimulated by TGF-beta 1, which may be important for the inhibition of keratinocyte proliferation.</p>
Molecular Mass	163.02 kDa
AA Sequence	MDTTAAAALPAFVALLLLSPWPLLGSAQQQFSAGGCTFDDGPGACDYHQDLYDDF EWWHVSAQEPHYLPPEMPQGSYMIVDSSDHPGKARLQLPTMKENDTHCIDFSYL

 Tel: 1-631-559-9269 1-516-512-3133

 Email: info@creative-biomart.com  Fax: 1-631-938-8127

 45-1 Ramsey Road, Shirley, NY 11967, USA

LYSQKGLNPGTLNILVRVNGPLANPIWNVGTGFTGRDWLRAELAVSTFWPNEYQVIF
 EAEVSGGRSGYIAIDDIQVLSYPCDKSPHFLRLGDVEVNAGQNATFQCIATGRDAVH
 NKLWLQRRNGEDIPVAQTKNINHRRFAASFRLQEVTKTDQDLYRCVTQSERGSQVS
 NFAQLIVREPPRIAPPQLLGVGPTYLLIQLNANSIIGDGPILKEVEYRMTSGSWTETH
 AVNPTYKLWHLDPDTEYEIRVLLTRPGEGGTGLPGPPLITRTKCAEPMRTPKTLKIA
 EIQARRIAVDWESLGYNITRCHTFNVTICYHYFRGHNESKADCLDMDPKAPQHVVNH
 LPPYTNVSLKMILTNPGRKESEETIIQTDEDVPGPVPVKSQGTSEFNKIFLNWKEP
 LDPNGIITQYEISYSSIRSFDPVAVPVAGPPQTVSNLWNSTHHVFMHLHPGTTYQFFIR
 ASTVKGFPGPATAINVTTNISAPTLPDYEGVDASLNETATTITVLLRPAQAKGAPISAYQ
 IVVEELHPHRTKREAGAMECYQVPVTYQNAMSSGAPYYFAAELPPGNLPEPAPFTV
 GDNRTYQGFWNPPAPRKGYNIFYQAMSSVEKETKTQCVRATKAAATEEPEVIPDP
 AKQTRVVKIAGISAGILVFILLLVVILIVKSKLAKKRKDAMGNTRQEMTHMVNAMD
 RSYADQSTLHAEDPLSITFMDQHNFSPRYENHSATAESSRLLDVPRYLCEGTESPY
 QTGQLHPAIRVADLLQHINLMKTSDSYGFKEEYESFFEGQSASWDVAKKDQNRANK
 RYGNIIAYDHSRVILQPVEDDPSSDIYINANYIDIWLYRDGYQRPSHYIATQGPVHETV
 YDFWRMIWQEQSACIVMVTNLVEVGRVKCYKYWPDDTEVYGFVTCVEMEPLAE
 YVVRTFTLERRGYNEIREVKQFHFTGWPDHGVPYHATGLLSFIRRVKLSNPPSAGPI
 VVHCSAGAGRTGCVIYIDIMLDMAREGVVDIYNCVKALRSRRINMVQTEEQYIFIHD
 AILEACLCGETAIPVCEFKAAAYFDMIRIDSQTNSSHLKDEFQTLNSVTPRLQAEDCSIA
 CLPRNHDKNRFMDMLPPDRCLPFLITIDGESSNYINAALMDSYRQPAAAFIVTQYPLPN
 TVKDFWRLVYDYGCTSIVMLNEVDLSQGCPQYWPEEGMLRYGPIQVECMSCSMDC
 DVINRIFRICNLTRPQEGYLMVQQFQYLGWASHREVPGSKRSFLKILQVEKWQEEC
 EEGEGRTIIHCLNGGGRSGMFCAIGIVVEMVKRQNVVDFHAVKTLRNSKPNMVEA
 PEQYRFCYDVALEYLESSSGPTRRRLEQKLISEEDLAANDILDYKDDDDKV

Purity > 80% as determined by SDS-PAGE and Coomassie blue staining

Stability Stable for 3 months from receipt of products under proper storage and handling conditions.

 Tel: 1-631-559-9269 1-516-512-3133

 Email: info@creative-biomart.com  Fax: 1-631-938-8127

 45-1 Ramsey Road, Shirley, NY 11967, USA

Storage	Store at -80 centigrade. Avoid repeated freeze-thaw cycles.
Concentration	50 µg/mL as determined by BCA
Storage Buffer	100 mM glycine, 25 mM Tris-HCl, pH 7.3.
GENE INFORMATION	
Gene Name	PTPRK protein tyrosine phosphatase receptor type K [Homo sapiens (human)]
Official Symbol	PTPRK
Synonyms	PTPRK; protein tyrosine phosphatase, receptor type, K; receptor-type tyrosine-protein phosphatase kappa; R PTP kappa; protein-tyrosine phosphatase kappa; protein-tyrosine phosphatase, receptor type, kappa; dJ480J14.2.1 (protein tyrosine phosphatase, receptor type, K (R-PTP-KAPPA, protein tyrosine phosphatase kappa, protein tyrosine phosphatase kappa; R-PTP-kappa; DKFZp686C2268; DKFZp779N1045;
Gene ID	5796
mRNA Refseq	NM_001135648
Protein Refseq	NP_001129120
MIM	602545
UniProt ID	Q15262

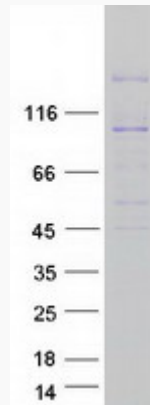
 Tel: 1-631-559-9269 1-516-512-3133

 Email: info@creative-biomart.com  Fax: 1-631-938-8127

 45-1 Ramsey Road, Shirley, NY 11967, USA



SDS-PAGE



Tel: 1-631-559-9269 1-516-512-3133

Email: info@creative-biomart.com Fax: 1-631-938-8127

45-1 Ramsey Road, Shirley, NY 11967, USA