

# Active Recombinant Human Protein Tyrosine Phosphatase, Receptor Type, M

Cat. No. PTPRM-336H Lot. No. (See product label)

## SPECIFICATION

<b>Species</b>	Human
<b>Source</b>	E.coli
<b>Description</b>	Protein Tyrosin Phosphatase, cytoplasmic region, containing catalytic domain D1 C-terminally linked to the non-catalytic domain D2. PTPmu is an Ig superfamily receptor protein-tyrosine phosphatase which promotes cell-cell adhesion in a homophilic, Ca <sup>2+</sup> independent manner and interacts with the cadherin-catenin complex. The intracellular region of PTPμ contains three domains: the juxtamembrane (JM, aa 765-923) and two phosphatase domains (D1 and D2). Only the D1 domain is catalitically active.
<b>Usage</b>	For in vitro use only.
<b>Form</b>	Liquid. Supplied in 10 mM Tris- HCl, 10 mM Bis-Tris-HCl pH 7.0.
<b>Activity</b>	1 nmol of PTPμ will hydrolyze 1.2 nmol of pNPP per minute at 37°C at pH 4.8.
<b>Purity</b>	> 95% by SDS-PAGE.
<b>Storage</b>	Quality guaranteed for 12 months, store at -80°C. Avoid freeze / thaw cycles.

## GENE INFORMATION

 Tel: 1-631-559-9269 1-516-512-3133

 Email: [info@creative-biomart.com](mailto:info@creative-biomart.com)  Fax: 1-631-938-8127

 45-1 Ramsey Road, Shirley, NY 11967, USA

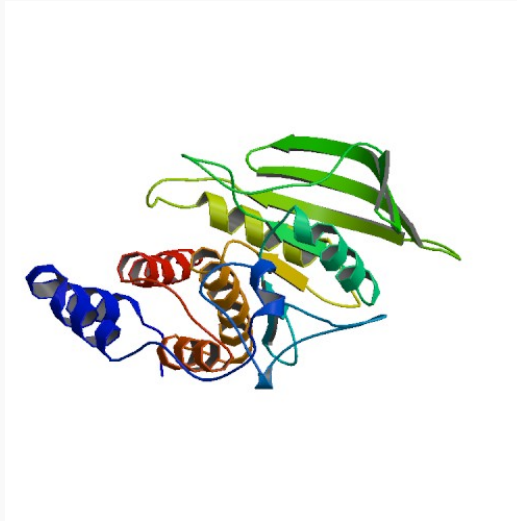
<b>Gene Name</b>	PTPRM protein tyrosine phosphatase, receptor type, M [ Homo sapiens ]
<b>Synonyms</b>	PTPRM; protein tyrosine phosphatase, receptor type, M; RPTPM; RPTPU; PTPRL1; hR-PTPu; R-PTP-MU; MGC166994; protein tyrosine phosphatase mu; protein tyrosine phosphatase, receptor type, mu polypeptide; EC 3.1.3.48
<b>Gene ID</b>	5797
<b>mRNA Refseq</b>	NM_001105244
<b>Protein Refseq</b>	NP_001098714
<b>MIM</b>	176888
<b>UniProt ID</b>	P28827
<b>Chromosome Location</b>	18p11.2
<b>Pathway</b>	Adherens junction; Cell adhesion molecules (CAMs)
<b>Function</b>	cadherin binding; hydrolase activity; protein binding; receptor activity; transmembrane receptor protein tyrosine phosphatase activity

 Tel: 1-631-559-9269 1-516-512-3133

 Email: [info@creative-biomart.com](mailto:info@creative-biomart.com)  Fax: 1-631-938-8127

 45-1 Ramsey Road, Shirley, NY 11967, USA

PDB rendering based  
on 1rpm.



 Tel: 1-631-559-9269 1-516-512-3133

 Email: [info@creative-biomart.com](mailto:info@creative-biomart.com)  Fax: 1-631-938-8127

 45-1 Ramsey Road, Shirley, NY 11967, USA