

## Recombinant Human PTPRN Protein

Cat. No. PTPRN-01H Lot. No. (See product label)

### SPECIFICATION

<b>Product Overview</b>	Recombinant Human PTPRN Protein was expressed in E.coli.
<b>Species</b>	Human
<b>Source</b>	E.coli
<b>Description</b>	The protein encoded by this gene is a member of the protein tyrosine phosphatase (PTP) family. PTPs are known to be signaling molecules that regulate a variety of cellular processes including cell growth, differentiation, mitotic cycle, and oncogenic transformation. This PTP possesses an extracellular region, a single transmembrane region, and a single catalytic domain, and thus represents a receptor-type PTP. This PTP was found to be an autoantigen that is reactive with insulin-dependent diabetes mellitus (IDDM) patient sera, and thus may be a potential target of autoimmunity in diabetes mellitus. Alternate splicing results in multiple transcript variants.
<b>Form</b>	50mM Tris-HCl, pH8.0, 200mM NaCl, 10% glycerol
<b>Molecular Mass</b>	42 kDa
<b>AASequence</b>	RQQDKERLAALGPEGAHGDTTFEYQDLCRQHMATKSLFNRAEGPPEPSRVSSVSS QFSDAAQASPSHSSSTPSWCEEPAQANMDISTGHMILAYMEDHLRNRDRLAKEWQ ALCAYQAEPNTCATAQGEGNIKKNRHPDFLPYDHARIKLVESPSRSDYINASPIIE HDPRMPAYIATQGPLSHTIADFWQMVWESGCTVIVMLTPLVEDGVKQCDRYWPDE GASLYHVVEVNLVSEHIWCEDFLVRSFYLKNVQTQETR TLTQFHFLSWPAEGTPAST RPLLD FRRKVNKCYRGRSCPIIVHCSDGAGRTGTYILIDMVLNRMAGKVKEIDIAATL

Tel: 1-631-559-9269 1-516-512-3133

Email: [info@creative-biomart.com](mailto:info@creative-biomart.com) Fax: 1-631-938-8127

45-1 Ramsey Road, Shirley, NY 11967, USA

EHVRDQRPGLVRSKDQFEFALTAVAAEEVNAILKALPQ

**Purity** ≥95% by SDS-PAGE

**Storage** Store it under sterile conditions at -20 to -80 centigrade. It is recommended that the protein be aliquoted for optimal storage. Avoid repeated freeze-thaw cycles.

**Concentration** 2.05 mg/mL

## GENE INFORMATION

**Gene Name** [PTPRN protein tyrosine phosphatase, receptor type, N \[ Homo sapiens \(human\) \]](#)

**Official Symbol** [PTPRN](#)

**Synonyms** PTPRN; protein tyrosine phosphatase, receptor type, N; receptor-type tyrosine-protein phosphatase-like N; IA 2; ICA 512; PTP IA-2; islet cell antigen 2; islet cell antigen 512; islet cell autoantigen 3; protein tyrosine phosphatase-like N; IA2; IA-2; ICA512; R-PTP-N; IA-2/PTP; FLJ16131

**Gene ID** [5798](#)

**mRNA Refseq** [NM\\_001199763](#)

**Protein Refseq** [NP\\_001186692](#)

**MIM** [601773](#)

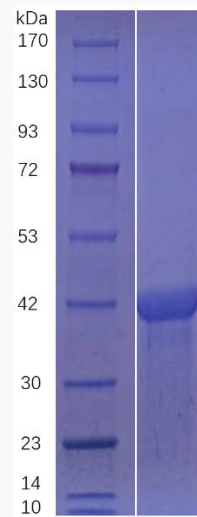
**UniProt ID** [Q16849](#)

 Tel: 1-631-559-9269 1-516-512-3133

 Email: [info@creative-biomart.com](mailto:info@creative-biomart.com)  Fax: 1-631-938-8127

 45-1 Ramsey Road, Shirley, NY 11967, USA

**SDS-PAGE and WB**



Reducing 12% SDS-PAGE (CBB stained) analysis profile of purified PTPRN-01H

 Tel: 1-631-559-9269 1-516-512-3133

 Email: [info@creative-biomart.com](mailto:info@creative-biomart.com)  Fax: 1-631-938-8127

 45-1 Ramsey Road, Shirley, NY 11967, USA