

## Recombinant Human PTPRN Protein (Met687-Gln979), N-His tagged

Cat. No. PTPRN-6111H Lot. No. (See product label)

### SPECIFICATION

<b>Product Overview</b>	Recombinant human PTPRN (Met687-Gln979) fused with the N-terminal His tag was expressed in E. coli.
<b>Species</b>	Human
<b>Source</b>	E.coli
<b>ProteinLength</b>	Met687-Gln979
<b>Form</b>	Lyophilized powder/frozen liquid
<b>Molecular Mass</b>	32.23 kDa
<b>Purity</b>	> 90 % as determined by SDS-PAGE
<b>Notes</b>	For research use only.
<b>Storage</b>	Use a manual defrost freezer and avoid repeated freeze thaw cycles. Store at 2 to 8 centigrade for one week. Store at -20 to -80 centigrade for twelve months from the date of receipt.
<b>Storage Buffer</b>	Supplied as solution form in PBS or lyophilized from PBS.
<b>Reconstitution</b>	Reconstitute in sterile water for a stock solution.

 Tel: 1-631-559-9269 1-516-512-3133

 Email: [info@creative-biomart.com](mailto:info@creative-biomart.com)  Fax: 1-631-938-8127

 45-1 Ramsey Road, Shirley, NY 11967, USA

**Shipping** They are shipped out with dry ice/blue ice unless customers require otherwise.

## GENE INFORMATION

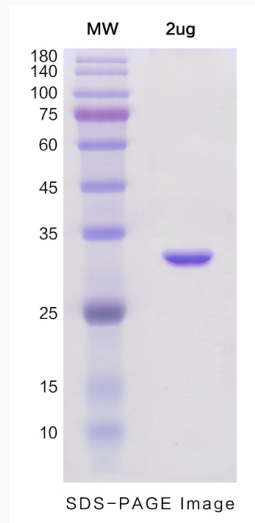
<b>Gene Name</b>	PTPRN protein tyrosine phosphatase, receptor type, N [ Homo sapiens (human) ]
<b>Official Symbol</b>	PTPRN
<b>Synonyms</b>	PTPRN; protein tyrosine phosphatase, receptor type, N; receptor-type tyrosine-protein phosphatase-like N; IA 2; ICA 512; PTP IA-2; islet cell antigen 2; islet cell antigen 512; islet cell autoantigen 3; protein tyrosine phosphatase-like N; IA2; IA-2; ICA512; R-PTP-N; IA-2/PTP; FLJ16131;
<b>Gene ID</b>	5798
<b>mRNA Refseq</b>	NM_001199763
<b>Protein Refseq</b>	NP_001186692
<b>MIM</b>	601773
<b>UniProt ID</b>	Q16849

 Tel: 1-631-559-9269 1-516-512-3133

 Email: [info@creative-biomart.com](mailto:info@creative-biomart.com)  Fax: 1-631-938-8127

 45-1 Ramsey Road, Shirley, NY 11967, USA

**SDS-PAGE**



 Tel: 1-631-559-9269 1-516-512-3133

 Email: [info@creative-biomart.com](mailto:info@creative-biomart.com)  Fax: 1-631-938-8127

 45-1 Ramsey Road, Shirley, NY 11967, USA