

# Recombinant Full Length Human PTPRN Protein, DDK-tagged

Cat. No. PTPRN-674H Lot. No. (See product label)

## SPECIFICATION

<b>Product Overview</b>	Purified recombinant protein of Human protein tyrosine phosphatase, receptor type, N (PTPRN), transcript variant 1, full length, with C-terminal DDK tag, expressed in sf9 insect cells.
<b>Species</b>	Human
<b>Source</b>	Insect Cells
<b>Description</b>	<p>The protein encoded by this gene is a member of the protein tyrosine phosphatase (PTP) family. PTPs are known to be signaling molecules that regulate a variety of cellular processes including cell growth, differentiation, mitotic cycle, and oncogenic transformation. This PTP possesses an extracellular region, a single transmembrane region, and a single catalytic domain, and thus represents a receptor-type PTP. This PTP was found to be an autoantigen that is reactive with insulin-dependent diabetes mellitus (IDDM) patient sera, and thus may be a potential target of autoimmunity in diabetes mellitus. Alternate splicing results in multiple transcript variants.</p>
<b>Molecular Mass</b>	103 kDa
<b>Purity</b>	> 80% as determined by SDS-PAGE and Coomassie blue staining
<b>Stability</b>	Stable for 12 months from the date of receipt of the product under proper storage and handling conditions. Avoid repeated freeze-thaw cycles.
<b>Storage</b>	Store at -80 centigrade.

 Tel: 1-631-559-9269 1-516-512-3133

 Email: [info@creative-biomart.com](mailto:info@creative-biomart.com)  Fax: 1-631-938-8127

 45-1 Ramsey Road, Shirley, NY 11967, USA

<b>Concentration</b>	>50 µg/mL as determined by microplate BCA method
<b>Storage Buffer</b>	50 mM Tris-HCl, pH8.0, 100 mM glycine, 10% glycerol.
<b>Full Length</b>	Full L.
<b>GENE INFORMATION</b>	
<b>Gene Name</b>	PTPRN protein tyrosine phosphatase receptor type N [ Homo sapiens (human) ]
<b>Official Symbol</b>	PTPRN
<b>Synonyms</b>	PTPRN; protein tyrosine phosphatase receptor type N; IA2; IA-2; ICA512; R-PTP-N; IA-2/PTP; receptor-type tyrosine-protein phosphatase-like N; ICA 512; PTP IA-2; insulinoma-associated tyrosine-phosphatase-like protein; islet cell antigen 2; islet cell antigen 512; islet cell autoantigen 3; protein tyrosine phosphatase-like N; EC 3.1.3.48
<b>Gene ID</b>	5798
<b>mRNA Refseq</b>	NM_002846
<b>Protein Refseq</b>	NP_002837
<b>MIM</b>	601773
<b>UniProt ID</b>	Q16849

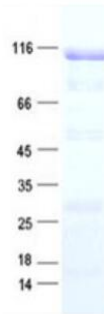
 Tel: 1-631-559-9269 1-516-512-3133

 Email: [info@creative-biomart.com](mailto:info@creative-biomart.com)  Fax: 1-631-938-8127

 45-1 Ramsey Road, Shirley, NY 11967, USA



**SDS-PAGE**



☎ Tel: 1-631-559-9269 1-516-512-3133

☎ Email: [info@creative-biomart.com](mailto:info@creative-biomart.com) ☎ Fax: 1-631-938-8127

☎ 45-1 Ramsey Road, Shirley, NY 11967, USA