

## Recombinant Human PTPRN Protein, His-tagged

Cat. No. PTPRN-98H Lot. No. (See product label)

### SPECIFICATION

<b>Product Overview</b>	Recombinant Human PTPRN Protein, fused to His-tag, was expressed in E. coli.
<b>Species</b>	Human
<b>Source</b>	E.coli
<b>ProteinLength</b>	2-321 a.a.
<b>Description</b>	The protein encoded by this gene is a member of the protein tyrosine phosphatase (PTP) family. PTPs are known to be signaling molecules that regulate a variety of cellular processes including cell growth, differentiation, mitotic cycle, and oncogenic transformation. This PTP possesses an extracellular region, a single transmembrane region, and a single catalytic domain, and thus represents a receptor-type PTP. This PTP was found to be an autoantigen that is reactive with insulin-dependent diabetes mellitus (IDDM) patient sera, and thus may be a potential target of autoimmunity in diabetes mellitus. Alternate splicing results in multiple transcript variants.
<b>Form</b>	PBS (pH 7.4).
<b>Molecular Mass</b>	34.8 kDa
<b>AA Sequence</b>	MHPGHSYGDLPGPSPAQLFQDSGLLYLAQELPAPSRARVPRPPEQGSSSRAEDSP EGYEKEGLGDRGEKPASPAVQPDAALQRLAAVLAGYGVELRQLTPEQLSTLLTLLQ LLPKGAGRNPGGVVNVGADIKKTMEGPVEGRDTAELPARTSPMPGHPTASPTSSEV QQVPSVSSPEPPKAARPPVTPVLLEKKSPLGQSQPTVAGQPSARPAEEYGYIVTD

 Tel: 1-631-559-9269 1-516-512-3133

 Email: [info@creative-biomart.com](mailto:info@creative-biomart.com)  Fax: 1-631-938-8127

 45-1 Ramsey Road, Shirley, NY 11967, USA

QKPLSLAAGVKLLEILAEHVMSSGSFINISVVGPAITFRIRHNEQNLSLADVTQQAG  
LVKSELEAQTGLQILQTGVGQREEAAVLPQTAHSTSPMRLEHHHHHH

**Purity** >90%

**Storage** Store it under sterile conditions at -20 to -80 centigrade. It is recommended that the protein be aliquoted for optimal storage. Avoid repeated freeze-thaw cycles.

**Concentration** 1.5 mg/ml

## GENE INFORMATION

**Gene Name** [PTPRN protein tyrosine phosphatase receptor type N \[ Homo sapiens \(human\) \]](#)

**Official Symbol** [PTPRN](#)

**Synonyms** IA2; IA-2; ICA512; R-PTP-N; IA-2/PTP

**Gene ID** [5798](#)

**mRNA Refseq** [NM\\_001199763](#)

**Protein Refseq** [NP\\_001186692](#)

**MIM** [601773](#)

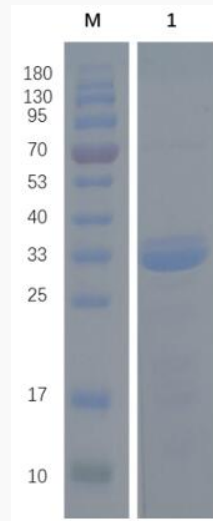
**UniProt ID** [Q16849](#)

 Tel: 1-631-559-9269 1-516-512-3133

 Email: [info@creative-biomart.com](mailto:info@creative-biomart.com)  Fax: 1-631-938-8127

 45-1 Ramsey Road, Shirley, NY 11967, USA

**SDS-PAGE**



Reducing 12% SDS-PAGE analysis profile of purified PTPRN (CBB stained).

 Tel: 1-631-559-9269 1-516-512-3133

 Email: [info@creative-biomart.com](mailto:info@creative-biomart.com)  Fax: 1-631-938-8127

 45-1 Ramsey Road, Shirley, NY 11967, USA