

# Recombinant Human PTPRN2 Protein (22-615 aa), His-tagged

Cat. No. PTPRN2-1702H Lot. No. (See product label)

## SPECIFICATION

<b>Product Overview</b>	Recombinant Human PTPRN2 Protein (22-615 aa) is produced by Yeast expression system. This protein is fused with a 6xHis tag at the N-terminal. Research Area: Immunology. Protein Description: Partial.
<b>Species</b>	Human
<b>Source</b>	Yeast
<b>ProteinLength</b>	22-615 aa
<b>Description</b>	Implicated in development of nervous syst and pancreatic endocrine cells.
<b>Form</b>	Tris-based buffer,50% glycerol
<b>Molecular Mass</b>	66.1 kDa
<b>AA Sequence</b>	AAPSSVPRGRQLPGRLGCLLEEGLCGASEACVNDGVFGRCQKVPAMDFYRYEVSP VALQRLRVALQKLSGTGFTWQDDYTQYVMDQELADLPKTYLRRPEASSPARPSKH SVGSERRYSREGGAALANALRRHLPFLEALSQAPASDVLARTHTAQDRPPAEGDDR FSESILTYVAHTSALTYPPGSRTQLREDLLPRTLGLQLQPDELSPKVDSGVDRHHLMA ALSAYAAQRPPAPPGECSLEPQYLLRAPSRMPRPLLAPAAPQKWPSPLGDSERPSS TGDGARIHTLLKDLQRQPAEVRGLSGLELDGMAELMAGLMQGVDHGVARGSPGRA ALGESGEQADGPKATLRGDSFPDDGVQDDDDRLYQEVHRLSATLGGLLQDHGSRL LPGALPFARPLDMERKKSEHPPESSLSSEEETAGVENVKSQTYSKDLLGQQPHSEPG AAAFGELQNMGPSKEEQSLPAGAQEALSDGLQLEVQPSEEEARGYIVTDRDPLR

 Tel: 1-631-559-9269 1-516-512-3133

 Email: [info@creative-biomart.com](mailto:info@creative-biomart.com)  Fax: 1-631-938-8127

 45-1 Ramsey Road, Shirley, NY 11967, USA

PEEGRRLVEDVARLLQVPSSAFADVEVLGPAVTFKVSANVQNVTTEDVEKATVDNK  
DKLEETSGLKILQTGVGSKSKLKLFLPPQAEQEDSTKF

**Purity** > 90% as determined by SDS-PAGE.

**Notes** Repeated freezing and thawing is not recommended. Store working aliquots at 4 centigrade for up to one week.

**Storage** The shelf life is related to many factors, storage state, buffer ingredients, storage temperature and the stability of the protein itself. Generally, the shelf life of liquid form is 6 months at -20 centigrade/-80 centigrade. The shelf life of lyophilized form is 12 months at -20 centigrade/-80 centigrade.

**Concentration** A hardcopy of COA with reconstitution instruction is sent along with the products.

## GENE INFORMATION

**Gene Name** [PTPRN2 protein tyrosine phosphatase, receptor type, N polypeptide 2 \[ Homo sapiens \]](#)

**Official Symbol** [PTPRN2](#)

**Synonyms** PTPRN2; IA 2beta; IAR PTPRP; ICAAR; KIAA0387; phogrin; IAR; PTPRP; IA-2beta; R-PTP-N2;

**Gene ID** [5799](#)

**mRNA Refseq** [NM\\_002847](#)

**Protein Refseq** [NP\\_002838](#)

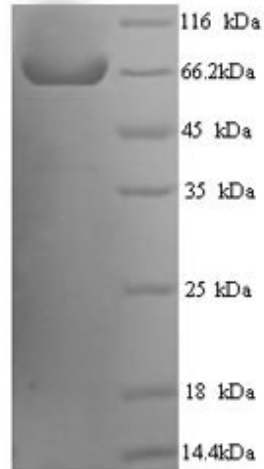
 Tel: 1-631-559-9269 1-516-512-3133

 Email: [info@creative-biomart.com](mailto:info@creative-biomart.com)  Fax: 1-631-938-8127

 45-1 Ramsey Road, Shirley, NY 11967, USA

MIM 601698

UniProt ID Q92932



(Tris-Glycine gel) Discontinuous SDS-PAGE (reduced) with 5% enrichment gel and 15% separation gel.

 Tel: 1-631-559-9269 1-516-512-3133

 Email: [info@creative-biomart.com](mailto:info@creative-biomart.com)  Fax: 1-631-938-8127

 45-1 Ramsey Road, Shirley, NY 11967, USA