

# Recombinant Human PTPRN2 Protein, Myc/DDK-tagged, C13 and N15-labeled

**Cat. No.** PTPRN2-2429H    **Lot. No.** (See product label)

## SPECIFICATION

<b>Product Overview</b>	PTPRN2 MS Standard C13 and N15-labeled recombinant protein (NP_570857) with a C-terminal MYC/DDK tag, was expressed in HEK293 cells.
<b>Species</b>	Human
<b>Source</b>	HEK293
<b>Description</b>	This gene encodes a protein with sequence similarity to receptor-like protein tyrosine phosphatases. However, tyrosine phosphatase activity has not been experimentally validated for this protein. Studies of the rat ortholog suggest that the encoded protein may instead function as a phosphatidylinositol phosphatase with the ability to dephosphorylate phosphatidylinositol 3-phosphate and phosphatidylinositol 4,5-diphosphate, and this function may be involved in the regulation of insulin secretion. This protein has been identified as an autoantigen in insulin-dependent diabetes mellitus. Alternative splicing results in multiple transcript variants.
<b>Molecular Mass</b>	109.4 kDa
<b>AA Sequence</b>	MGPPLPLLLLLLLLLLPPRVLPAPSSVPRGRQLPGRLDGVFGRCQKVPAMDFRYE VSPVALQRLRVALQKLSGTGFTWQDDYTQYVMDQELADLPKTYLRRPEASSPARPS KHSVGSERRYSREGGAALANALRRHLPFLEALSQAPASDVLARTHTAQDRPPAEGD DRFSESILTYVAHTSALTYPPGPRTQLREDLLPRTLGLQLQPDELSPKVDGSDRHHL MAALSAYAAQRPPAPPGECSLEPQYLLRAPSRMPRPLLAPAAPQKWPSPLGDS

 Tel: 1-631-559-9269    1-516-512-3133

 Email: [info@creative-biomart.com](mailto:info@creative-biomart.com)     Fax: 1-631-938-8127

 45-1 Ramsey Road, Shirley, NY 11967, USA

PSSTGDGARIHTLLKDLQRQPAEVRGLNGLELDGMAELMAGLMQGVHDHGVARGSP  
 GRAALGESGEQADGPKATLRGDSFPDDGVQDDDDRLYQEVHRLSATLGGLLQDHG  
 SROLLPGALPFARPLDMERKKSEHPESLSSEEETAGVENVKSQTYSKDLLGQQPHS  
 EPGAAAFGELQNQMPPGPSKEEQSLPAGAQAALSDGLQLEVQPSEEEARGYIVTDR  
 DPLRPEEGRRLVEDVARLLQVPSSAFADVEVLGPAVTFKVSANVQNVTTEDVEKAT  
 VDNKDKLEETSGLKILQGTGVGSKSLKFLPPQAEQEDSTKFIALTLVSLACILGVLLAS  
 GLIYCLRHSSQHRLKEKLSGLGGDPGADATAAYQELCRQRMATRPPDRPEGPHTS  
 RISSVSSQFSDGPIPSARSSASSWSEEPVQSNMDISTGHMILSYMEDHLKNKNRL  
 EKEWEALCAYQAEPNSSFVAQREENVPKNRSLAVLTYDHSRVLLKAENSHSHSDYI  
 NASPIMDHDPRNPAYIATQGGLPATVADFWQMVWESGCVVIVMLTPLAENGVRQCY  
 HYWPDEGSNLYHIYEVNLVSEHIWCEDFLVRSFYLNKLTNETRTVTQFHFLSWYD  
 RGVPSRSSRLLDFRRKVNKCYRGRSCPIIVHCSDGAGRSPTYVLIDMVLNKMMAKGA  
 KEIDIAATLEHLRDQRPGMVQTKEQFEFALTAVAAEEVNAILKALPQSGPTRTRRLEQK  
 LISEEDLAANDILDYKDDDDKV

**Purity** > 80% as determined by SDS-PAGE and Coomassie blue staining

**Stability** Stable for 3 months from receipt of products under proper storage and handling conditions.

**Storage** Store at -80 centigrade. Avoid repeated freeze-thaw cycles.

**Concentration** 50 µg/mL as determined by BCA

**Storage Buffer** 100 mM glycine, 25 mM Tris-HCl, pH 7.3.

## GENE INFORMATION

**Gene Name** [PTPRN2 protein tyrosine phosphatase receptor type N2 \[ Homo sapiens \(human\) \]](#)

**Official Symbol** [PTPRN2](#)

 Tel: 1-631-559-9269 1-516-512-3133

 Email: [info@creative-biomart.com](mailto:info@creative-biomart.com)  Fax: 1-631-938-8127

 45-1 Ramsey Road, Shirley, NY 11967, USA

**Synonyms** PTPRN2; protein tyrosine phosphatase, receptor type, N polypeptide 2; receptor-type tyrosine-protein phosphatase N2; IA 2beta; IAR PTPRP; ICAAR; KIAA0387; phogrin; tyrosine phosphatase IA-2 beta; islet cell autoantigen-related protein; protein tyrosine phosphatase receptor pi; IAR/receptor-like protein-tyrosine phosphatase; IAR; PTPRP; IA-2beta; R-PTP-N2;

**Gene ID** [5799](#)

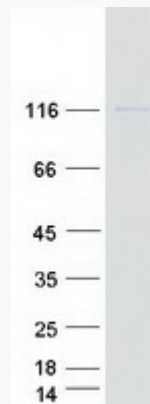
**mRNA Refseq** [NM\\_130842](#)

**Protein Refseq** [NP\\_570857](#)

**MIM** [601698](#)

**UniProt ID** [Q92932](#)

**SDS-PAGE**



 Tel: 1-631-559-9269 1-516-512-3133

 Email: [info@creative-biomart.com](mailto:info@creative-biomart.com)  Fax: 1-631-938-8127

 45-1 Ramsey Road, Shirley, NY 11967, USA