

## Recombinant Human PTPRN2 protein, His-tagged

**Cat. No.** PTPRN2-8111H    **Lot. No.** (See product label)

### SPECIFICATION

<b>Product Overview</b>	Recombinant Human PTPRN2 aa. (Cys839~Gln1015) fused with N-terminal His tag was produced in E. coli cells.
<b>Species</b>	Human
<b>Source</b>	E.coli
<b>ProteinLength</b>	Cys839~Gln1015
<b>Form</b>	Freeze-dried powder
<b>Molecular Mass</b>	24kDa as determined by SDS-PAGE reducing conditions.
<b>Endotoxin</b>	<1.0EU per 1ug (determined by the LAL method)
<b>Purity</b>	>90%
<b>Characteristic</b>	The isoelectric point is 7.2.
<b>Applications</b>	Positive Control; Immunogen; SDS-PAGE; WB.
<b>Stability</b>	The thermal stability is described by the loss rate of the target protein. The loss rate was determined by accelerated thermal degradation test, that is, incubate the protein at 37°C for 48h, and no obvious degradation and precipitation were observed. (Referring from China Biological Products Standard, which was calculated by the

 Tel: 1-631-559-9269    1-516-512-3133

 Email: [info@creative-biomart.com](mailto:info@creative-biomart.com)     Fax: 1-631-938-8127

 45-1 Ramsey Road, Shirley, NY 11967, USA

Arrhenius equation.) The loss of this protein is less than 5% within the expiration date under appropriate storage condition.

**Storage**

Avoid repeated freeze/thaw cycles. Store at 2-8°C for one month. Aliquot and store at -80°C for 12 months.

**Concentration**

200µg/mL

**Storage Buffer**

100mM NaHCO<sub>3</sub>, 500mM NaCl, pH8.3, containing 1mM EDTA, 1mM DTT, 0.01% sarcosyl, 5% Trehalose and Proclin300.

**Reconstitution**

Reconstitute in 100mM NaHCO<sub>3</sub>, 500mM NaCl (pH8.3) to a concentration of 0.1-1.0 mg/mL. Do not vortex.

## GENE INFORMATION

**Gene Name**

PTPRN2 protein tyrosine phosphatase, receptor type N2 [ Homo sapiens (human) ]

**Official Symbol**

PTPRN2

**Gene ID**

5799

**mRNA Refseq**

NM\_001308267.1

**Protein Refseq**

NP\_001295196.1

**UniProt ID**

Q92932

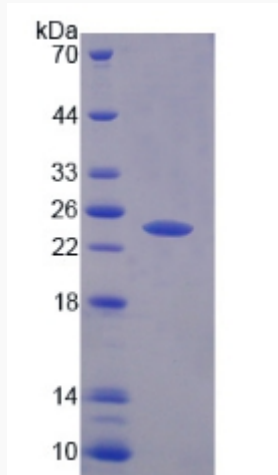
 Tel: 1-631-559-9269 1-516-512-3133

 Email: [info@creative-biomart.com](mailto:info@creative-biomart.com)  Fax: 1-631-938-8127

 45-1 Ramsey Road, Shirley, NY 11967, USA



SDS-PAGE



Tel: 1-631-559-9269 1-516-512-3133

Email: [info@creative-biomart.com](mailto:info@creative-biomart.com) Fax: 1-631-938-8127

45-1 Ramsey Road, Shirley, NY 11967, USA