

Recombinant Human PTPRS Protein, Myc/DDK-tagged, C13 and N15-labeled

Cat. No. PTPRS-4145H **Lot. No.** (See product label)

SPECIFICATION

Product Overview	PTPRS MS Standard C13 and N15-labeled recombinant protein (NP_570923) with a C-terminal MYC/DDK tag, was expressed in HEK293 cells.
Species	Human
Source	HEK293
Description	<p>The protein encoded by this gene is a member of the protein tyrosine phosphatase (PTP) family. PTPs are known to be signaling molecules that regulate a variety of cellular processes including cell growth, differentiation, mitotic cycle, and oncogenic transformation. This PTP contains an extracellular region, a single transmembrane segment and two tandem intracytoplasmic catalytic domains, and thus represents a receptor-type PTP. The extracellular region of this protein is composed of multiple Ig-like and fibronectin type III-like domains. Studies of the similar gene in mice suggested that this PTP may be involved in cell-cell interaction, primary axonogenesis, and axon guidance during embryogenesis. This PTP has been also implicated in the molecular control of adult nerve repair. Four alternatively spliced transcript variants, which encode distinct proteins, have been reported.</p>
Molecular Mass	168.4 kDa
AA Sequence	MAPTWGPGMVSVVGPMLLVLLVGGCAAEEPPRFIKEPKDQIGVSGGVASFVCQ ATGDPKPRVTWNKKGKKVNSQRFETIEFDESAGAVLRIQPLRTPRDENVYECVAQN

 Tel: 1-631-559-9269 1-516-512-3133

 Email: info@creative-biomart.com  Fax: 1-631-938-8127

 45-1 Ramsey Road, Shirley, NY 11967, USA

SVGEITVHAKLTVLREDQLPSGFPNIDMGPQLKVVERTRTATMLCAASGNPDPEITW
 FKDFLPVDPSASNGRIKQLRSGALQIESSEETDQGKYECVATNSAGVRYSSPANLYV
 RVRRVAPRFSILPMSHEIMPGGNVNITCVAVGSPMPYVKWMQGAEDLTPEDDMPV
 GRNVLELTDVKDSANYTCVAMSSLGVIEAVAQITVKSLPKAPGTPMVTENTATSITIT
 WDSGNPDPVSYVIEYKSKSQDGPYQIKEDITTRYSIGGLSPNSEYEIWWSAVNSIG
 QGPPSESVVTRTGEQAPASAPRNVQARMLSATTMIVQWEEPVEPNGLIRGYRVYYT
 MEPEHPVGNWQKHNVDSSLTTVGSLLLEDETYTVRVLAFSTVGDGPLSDPIQVKTQ
 QGVPGQPMNLRAEARSETSITLSWSPPRQESIKEYELLFREGDHGREVGRTFDPTTS
 YVVEDLKPNTHEYAFRLAARSPQGLGAFTPVVRQRTLQSIKPKNFVKMIMKTSVLLS
 WEFPDNYNSPTPYKIYNGLTLDVDGRTTKKLITHLKPHTFYNFVLTNRGSSSLGGLQ
 QTVTAWTAFNLLNGKPSVAPKPDADGFIMVYLPDGQSPVPVQSYFIVMVPLRKS
 RGQFLTPLGSPEDMDLEELIQDISRLQRRSLRHSRQLEVPRPYIAARFVLPPTFHPGD
 QKQYGGFDNRGLEPGHRYVLFVLAVLQKSEPTFAASPFSDPFQLDNPDPQPIVDGE
 EGLIWWIGPVLAVVFIICIVIAILLYKNKPDSKRKDKSEPRTKCLLNNADLAPHHKDPVE
 MRRINFQTPGMLSHPPPIADMAEHTERLKAANDSLKLSQEYESIDPGQQFTWEHSNL
 EVNPKPNRYANVIAYDHSRVLQPIEGIMGSDYINANYVDGYRRQNAYIATQGPLPET
 FGDFWRMVWEQRSATIVMMTRLEEKSRKCDQYWPNRGTETYGFIQVTLTLLDTIELAT
 FCVRTFSLHKNGSSEKREVRQFQFTAWPDHGVPEYPTPFLAFLRRVKTENPPDAGP
 IVVHCSAGVGRTGCFIVIDAMLERIKPEKTVDVYGHVTLMRSQRNYMVQTEDQYSFI
 HEALLEAVGCGNTEVPARSLYAYIQKLAQVEPGEHVTGMELEFKRLANSKAHTSRFI
 SANLPCNKFKNRLVNIMPYESTRVCLQPIRGVEGSDYINASFIDGYRQQKAYIATQGP
 LAETTEDFWRMLWENNSTIVMLTKLREMGREKCHQYWPAERSARYQYFVVDPM
 EYNMPQYILREFKVTDARDGQSRTVRQFQFTDWPEQGVPKSGEGFIDFIGQVHKT
 EQFGQDGPISVHCSAGVGRTGVFITLSIVLERMRYEGVVDIFQTVKMLRTQRPAMVQ
 TEDEYQFCYQAALYLGSDHYATSGPTRTRPLEQKLISEEDLAANDILDYKDDDDK
 V

Purity > 80% as determined by SDS-PAGE and Coomassie blue staining

Stability Stable for 3 months from receipt of products under proper storage and handling

 Tel: 1-631-559-9269 1-516-512-3133

 Email: info@creative-biomart.com  Fax: 1-631-938-8127

 45-1 Ramsey Road, Shirley, NY 11967, USA

conditions.

Storage Store at -80 centigrade. Avoid repeated freeze-thaw cycles.

Concentration 50 µg/mL as determined by BCA

Storage Buffer 100 mM glycine, 25 mM Tris-HCl, pH 7.3.

GENE INFORMATION

Gene Name [PTPRS protein tyrosine phosphatase receptor type S \[Homo sapiens \(human\) \]](#)

Official Symbol [PTPRS](#)

Synonyms PTPRS; protein tyrosine phosphatase, receptor type, S; receptor-type tyrosine-protein phosphatase S; R-PTP-S; R-PTP-sigma; protein tyrosine phosphatase PTPsigma; receptor-type tyrosine-protein phosphatase sigma; protein tyrosine phosphatase, receptor type, sigma; PTPSIGMA;

Gene ID [5802](#)

mRNA Refseq [NM_130853](#)

Protein Refseq [NP_570923](#)

MIM [601576](#)

UniProt ID [Q13332](#)

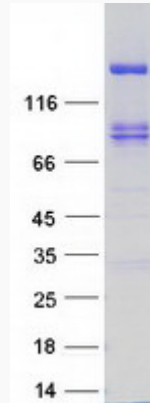
 Tel: 1-631-559-9269 1-516-512-3133

 Email: info@creative-biomart.com  Fax: 1-631-938-8127

 45-1 Ramsey Road, Shirley, NY 11967, USA



SDS-PAGE



Tel: 1-631-559-9269 1-516-512-3133

Email: info@creative-biomart.com Fax: 1-631-938-8127

45-1 Ramsey Road, Shirley, NY 11967, USA