

# Recombinant Human PTPRU Protein (Arg1263-Arg1446), N-His tagged

Cat. No. PTPRU-5511H Lot. No. (See product label)

## SPECIFICATION

<b>Product Overview</b>	Recombinant human PTPRU (Arg1263-Arg1446) fused with the N-His tag was expressed in E. coli.
<b>Species</b>	Human
<b>Source</b>	E.coli
<b>ProteinLength</b>	Arg1263-Arg1446
<b>Form</b>	Lyophilized powder/frozen liquid
<b>Molecular Mass</b>	23.57 kDa
<b>Purity</b>	> 90 % as determined by SDS-PAGE
<b>Notes</b>	For research use only.
<b>Storage</b>	Use a manual defrost freezer and avoid repeated freeze thaw cycles. Store at 2 to 8 centigrade for one week. Store at -20 to -80 centigrade for twelve months from the date of receipt.
<b>Storage Buffer</b>	0.01M PBS, pH 7.4, 0.02 % NLS
<b>Reconstitution</b>	Reconstitute in sterile water for a stock solution.

 Tel: 1-631-559-9269 1-516-512-3133

 Email: [info@creative-biomart.com](mailto:info@creative-biomart.com)  Fax: 1-631-938-8127

 45-1 Ramsey Road, Shirley, NY 11967, USA

**Shipping** They are shipped out with dry ice/blue ice unless customers require otherwise.

## GENE INFORMATION

**Gene Name** PTPRU protein tyrosine phosphatase, receptor type, U [ Homo sapiens (human) ]

**Official Symbol** PTPRU

**Synonyms**

PTPRU; protein tyrosine phosphatase, receptor type, U; receptor-type tyrosine-protein phosphatase U; FMI; hPTP J; PCP 2; pi R PTP Psi; PTP; PTPRO; PTP pi; pi R-PTP-Psi; protein tyrosine phosphatase J; protein-tyrosine phosphatase J; protein-tyrosine phosphatase pi; pancreatic carcinoma phosphatase 2; Receptor protein tyrosine phosphatase hPTP-J; protein tyrosine phosphatase receptor omicron; protein-tyrosine phosphatase receptor omicron; receptor-type protein-tyrosine phosphatase psi; PCP-2; PTP-J; PTPU2; PTP-PI; PTP-RO; PTPPSI; hPTP-J; R-PTP-U; R-PTP-PSI; FLJ37530;

**Gene ID** 10076

**mRNA Refseq** NM\_001195001

**Protein Refseq** NP\_001181930

**MIM** 602454

**UniProt ID** Q92729

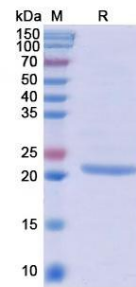
 Tel: 1-631-559-9269 1-516-512-3133

 Email: [info@creative-biomart.com](mailto:info@creative-biomart.com)  Fax: 1-631-938-8127

 45-1 Ramsey Road, Shirley, NY 11967, USA



SDS-PAGE



Tel: 1-631-559-9269 1-516-512-3133

Email: [info@creative-biomart.com](mailto:info@creative-biomart.com) Fax: 1-631-938-8127

45-1 Ramsey Road, Shirley, NY 11967, USA