

Recombinant Human PTTG1IP Protein, His/GST-tagged

Cat. No. PTTG1IP-715H Lot. No. (See product label)

SPECIFICATION

Product Overview	Recombinant Human PTTG1IP(Gln33~Glu96) fused with His/GST tag at N-terminal was expressed in E. coli.
Species	Human
Source	E.coli
ProteinLength	Gln33~Glu96
Description	This gene encodes a single-pass type I integral membrane protein, which binds to pituitary tumor-transforming 1 protein (PTTG1), and facilitates translocation of PTTG1 into the nucleus. Coexpression of this protein and PTTG1 induces transcriptional activation of basic fibroblast growth factor. Alternatively spliced transcript variants have been found for this gene.
Form	PBS, pH7.4, containing 0.01% SKL, 1mM DTT, 5% Trehalose and Proclin300.
Molecular Mass	37.0kDa
Endotoxin	<1.0EU per 1g (determined by the LAL method)
Purity	> 95%
Applications	Positive Control; Immunogen; SDS-PAGE; WB. If bio-activity of the protein is needed, please check active protein.

 Tel: 1-631-559-9269 1-516-512-3133

 Email: info@creative-biomart.com  Fax: 1-631-938-8127

 45-1 Ramsey Road, Shirley, NY 11967, USA

Stability The thermal stability is described by the loss rate. The loss rate was determined by accelerated thermal degradation test, that is, incubate the protein at 37 centigrade for 48h, and no obvious degradation and precipitation were observed. The loss rate is less than 5% within the expiration date under appropriate storage condition.

Storage Avoid repeated freeze/thaw cycles. Store at 2-8 centigrade for one month. Aliquot and store at -80 centigrade for 12 months.

Reconstitution Reconstitute in PBS or others.

GENE INFORMATION

Gene Name [PTTG1IP pituitary tumor-transforming 1 interacting protein \[Homo sapiens \]](#)

Official Symbol [PTTG1IP](#)

Synonyms PTTG1IP; pituitary tumor-transforming 1 interacting protein; C21orf1, C21orf3; pituitary tumor-transforming gene 1 protein-interacting protein; PBF; PTTG-binding factor; pituitary tumor-transforming gene protein-binding factor; C21orf1; C21orf3;

Gene ID [754](#)

mRNA Refseq [NM_004339](#)

Protein Refseq [NP_004330](#)

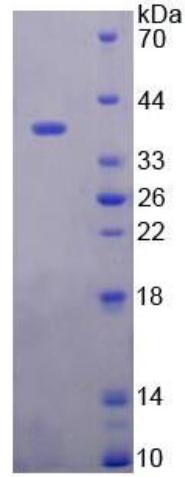
MIM [603784](#)

UniProt ID [P53801](#)

 Tel: 1-631-559-9269 1-516-512-3133

 Email: info@creative-biomart.com  Fax: 1-631-938-8127

 45-1 Ramsey Road, Shirley, NY 11967, USA



15% SDS-PAGE

Tel: 1-631-559-9269 1-516-512-3133

Email: info@creative-biomart.com Fax: 1-631-938-8127

45-1 Ramsey Road, Shirley, NY 11967, USA