

# Recombinant Full Length Human PUM2 Protein, C-Flag-tagged

Cat. No. PUM2-983HFL Lot. No. (See product label)

## SPECIFICATION

<b>Product Overview</b>	Recombinant Full Length Human PUM2 Protein, fused to Flag-tag at C-terminus, was expressed in Mammalian cells.
<b>Species</b>	Human
<b>Source</b>	Mammalian Cells
<b>Description</b>	This gene encodes a protein that belongs to a family of RNA-binding proteins. The encoded protein functions as a translational repressor during embryonic development and cell differentiation. This protein is also thought to be a positive regulator of cell proliferation in adipose-derived stem cells. Alternate splicing results in multiple transcript variants.
<b>Form</b>	25 mM Tris HCl, pH 7.3, 100 mM glycine, 10% glycerol.
<b>Molecular Mass</b>	113.8 kDa
<b>AA Sequence</b>	MNHDFQALALESRGMGELLPTKKFWEPDDSTKDGQKGIFLGDDEWRETAWGASH HSMSQPIMVQRRSGQG FHGNSEVNAILSPRSESGGLGVSMVEYVLSSSPADKLDL RFRKGNFGTRDAETDGPEKGDQK GKASP FEE DQNRDLKQGDDDDSKINGRGLPN GMDADCKDFNRTPGSRQASPTVEVVERLGPNTNPSEGLGPLNPNTANK PLVEEFSN PETQNL DAMEQV GLESLQFDYPGNQVPM DSSGATVGLFDYNSQQQLFQRTNALT V QQLTAAQ QQYALAAAQQPHIAGVFSAGLAPAAFV PNPYIISAAPP GTPYTAAGLA AAATLAGPAVVPPQYYGVPW GVYPANLFQQQAAAAANNTASQQAASQAQPGQQQ VLRAGAGQRPLTPNQGGQQQAESLAAAAANPTLA FGQGLATGMPGYQVLAPT

 Tel: 1-631-559-9269 1-516-512-3133

 Email: [info@creative-biomart.com](mailto:info@creative-biomart.com)  Fax: 1-631-938-8127

 45-1 Ramsey Road, Shirley, NY 11967, USA

AYYDQTGALVVGPGARTGLGAPVRLMAPTPVLISSAAAQAAAAAAGGTASS LTGS  
 TNGLFRPIGTQPPQQQQQPSTNLQNSFYGSSSLTNSSQSSSLFSHGPGQPGST  
 SLGFGSGNSLG AAIGSALSGFGSSVGSASSSATRRESLSTSSDLYKRSSSSLAPIG  
 QPFYNSLGFSSSPSPIGMPLPSQT PGHSLTPPPSLSSHGSSSSLHLGGLTNGSGRY  
 ISAAPGAEAKYRSASSTSSLFSSSSQLFPPSRLRYNRS DIMPSGRSRLLDFRNNRF  
 PNLQLRDLIGHIVEFSQDQHGSRFIQKLERATPAERQMVFNELQAAYQL MTDVFG  
 NYVIQKFFFEFGSLDQKLALATRIRGHVLPALQMYGCRVIQKALESISSDQQSEMVKE  
 LDGHVL KCVKDQNGNHVVQKCIQVQPSLQFIIDAFKQVFLSTHPYGCRVIQRI  
 LEHCTAEQTLPILEELHQH TEQLVQDQYGNVVIQHVLEHGRPEDKSKIVSEIRGKVL  
 ALSQHKFASNVVEKCVTHASRAERALLIDEVC CQNDGPHSALYTMMDQYANYVV  
 QKMIDMAEPAQRKIIMHKIRPHITTLRKYTYGKHILAKLEKYLLKNS  
 PDLGPIGGPPNGMLTRTRPLEQKLISEEDLAANDILDYKDDDDKV

<b>Purity</b>	> 80% as determined by SDS-PAGE and Coomassie blue staining.
<b>Stability</b>	Stable for 12 months from the date of receipt of the product under proper storage and handling conditions. Avoid repeated freeze-thaw cycles.
<b>Storage</b>	Store at -80 centigrade.
<b>Concentration</b>	>50 ug/mL as determined by microplate BCA method.
<b>Preparation</b>	Recombinant protein was captured through anti-DDK affinity column followed by conventional chromatography steps.
<b>Full Length</b>	Full L.

## GENE INFORMATION

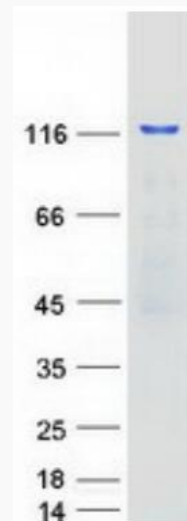
**Gene Name** [PUM2 pumilio RNA binding family member 2 \[ Homo sapiens \(human\) \]](#)

 Tel: 1-631-559-9269 1-516-512-3133

 Email: [info@creative-biomart.com](mailto:info@creative-biomart.com)  Fax: 1-631-938-8127

 45-1 Ramsey Road, Shirley, NY 11967, USA

<b>Official Symbol</b>	PUM2
<b>Synonyms</b>	PUMH2; PUML2
<b>Gene ID</b>	23369
<b>mRNA Refseq</b>	NM_015317.5
<b>Protein Refseq</b>	NP_056132.1
<b>MIM</b>	607205
<b>UniProt ID</b>	Q8TB72



Coomassie blue staining of purified PUM2 protein.

 Tel: 1-631-559-9269 1-516-512-3133

 Email: [info@creative-biomart.com](mailto:info@creative-biomart.com)  Fax: 1-631-938-8127

 45-1 Ramsey Road, Shirley, NY 11967, USA