

Recombinant Human PVR Full Length Transmembrane protein, His-tagged

Cat. No. PVR-2419H **Lot. No.** (See product label)

SPECIFICATION

Product Overview

Recombinant Human PVR protein(P15151)(21-417aa), fused with N-terminal His tag, was expressed in in vitro E. coli expression system.

Species

Human

Source

E.coli

ProteinLength

21-417aa

Form

If the delivery form is liquid, the default storage buffer is Tris/PBS-based buffer, 5%-50% glycerol.
If the delivery form is lyophilized powder, the buffer before lyophilization is Tris/PBS-based buffer, 6% Trehalose, pH 8.0.

Molecular Mass

46.7 kDa

AA Sequence

WPPPGTGDVVVQAPTQVPGFLGDSVTLPCYLQVPNMEVTHVSQLTWARHGESGS
MAVFHQQTQGPSYSESKRLEFVAARLGAELRNASLRMFGLRVEDEGNYTCLFVTFPQ
GSRSVDIWLRVLAKPQNTAEVQKVQLTGEPVPMARCVSTGGRPPAQITWHSDLGG
MPNTSQVPGFLSGTVTVTSLWILVPSSQVDGKNVTCKVEHESFEKPQLLTVNLTVYY
PPEVSISGYDNNWYLGQNEATLTCDARSNPEPTGYNWSTTMGPLPPFAVAQGAQL
LIRPVDKPIINTTLCNVTNALGARQAELTVQVKEGPPSEHSGMSRNAIIFLVLGILVFLIL
LGIGIYFYWSKCSREVLWHCHLCPSSTEHASASANGHVSYSAVSRENSSSQDPQTE
GTR

 Tel: 1-631-559-9269 1-516-512-3133

 Email: info@creative-biomart.com  Fax: 1-631-938-8127

 45-1 Ramsey Road, Shirley, NY 11967, USA

Purity	Greater than 85% as determined by SDS-PAGE.
Storage	Store at -20°C/-80°C upon receipt, aliquoting is necessary for mutiple use. Avoid repeated freeze-thaw cycles.
Reconstitution	Please reconstitute protein in deionized sterile water to a concentration of 0.1-1.0 mg/mL. We recommend to add 5-50% of glycerol (final concentration) and aliquot for long-term storage at -20°C/-80°C.

GENE INFORMATION

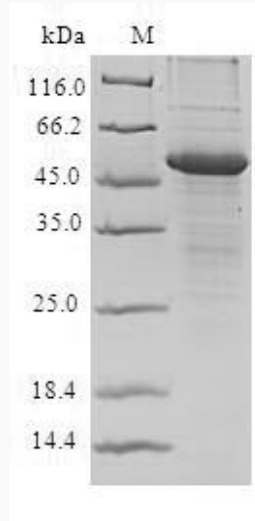
Gene Name	PVR poliovirus receptor [Homo sapiens]
Official Symbol	PVR
Synonyms	PVR; poliovirus receptor; PVS; CD155; HVED; Necl 5; NECL5; nectin like 5; Tage4; nectin-like 5; nectin-like protein 5; TAGE4; Necl-5; FLJ25946;
Gene ID	5817
mRNA Refseq	NM_001135768
Protein Refseq	NP_001129240
MIM	173850
UniProt ID	P15151

 Tel: 1-631-559-9269 1-516-512-3133

 Email: info@creative-biomart.com  Fax: 1-631-938-8127

 45-1 Ramsey Road, Shirley, NY 11967, USA

SDS-PAGE



 Tel: 1-631-559-9269 1-516-512-3133

 Email: info@creative-biomart.com  Fax: 1-631-938-8127

 45-1 Ramsey Road, Shirley, NY 11967, USA