

Recombinant Human PVR Protein (ECD), Fc-His-tagged(C-ter)

Cat. No. PVR-274H Lot. No. (See product label)

SPECIFICATION

Product Overview	Recombinant Human PVR Protein (ECD) with Fc-His tag (C-ter) was expressed in HEK293.
Species	Human
Source	HEK293
ProteinLength	Asp28-Asn343
Description	<p>The protein encoded by this gene is a transmembrane glycoprotein belonging to the immunoglobulin superfamily. The external domain mediates cell attachment to the extracellular matrix molecule vitronectin, while its intracellular domain interacts with the dynein light chain Tctex-1/DYNLT1. The gene is specific to the primate lineage, and serves as a cellular receptor for poliovirus in the first step of poliovirus replication. Multiple transcript variants encoding different isoforms have been found for this gene. [provided by RefSeq, Oct 2008]</p>
Form	Powder
Endotoxin	Endotoxin level is less than 0.1 EU/μg of the protein, as determined by the LAL test.
Purity	> 97% (by SDS-PAGE)
Applications	Binding, SDS-PAGE

 Tel: 1-631-559-9269 1-516-512-3133

 Email: info@creative-biomart.com  Fax: 1-631-938-8127

 45-1 Ramsey Road, Shirley, NY 11967, USA

Notes	For laboratory research only, not for drug, diagnostic or other use.
Storage	Lyophilized protein should be stored at -20°C or -80°C. After reconstitution, aliquot and store at -20°C for up to one month, at 2-8°C for up to one week. Storage in frost free freezers is not recommended. Avoid repeated freeze/thaw cycles. Suggest spin the vial prior to opening.
Storage Buffer	PBS (pH 7.4)
Reconstitution	Reconstitute to a concentration of 0.1-0.5 mg/ml in sterile distilled water.

GENE INFORMATION

Gene Name	PVR poliovirus receptor [Homo sapiens]
Official Symbol	PVR
Synonyms	PVR; poliovirus receptor; PVS; CD155; HVED; Necl 5; NECL5; nectin like 5; Tage4; nectin-like 5; nectin-like protein 5; TAGE4; Necl-5; FLJ25946;
Gene ID	5817
mRNA Refseq	NM_001135768
Protein Refseq	NP_001129240
MIM	173850
UniProt ID	P15151

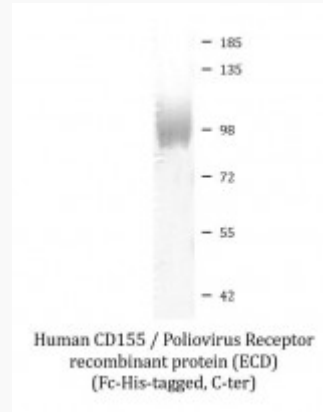
 Tel: 1-631-559-9269 1-516-512-3133

 Email: info@creative-biomart.com  Fax: 1-631-938-8127

 45-1 Ramsey Road, Shirley, NY 11967, USA



SDS-PAGE



Tel: 1-631-559-9269 1-516-512-3133

Email: info@creative-biomart.com Fax: 1-631-938-8127

45-1 Ramsey Road, Shirley, NY 11967, USA