

Active Recombinant Human PVR protein, His-tagged

Cat. No. PVR-3141H Lot. No. (See product label)

SPECIFICATION

Product Overview	Active Recombinant Human PVR protein(NP_006496.3)(Met 1-Asn 343) was expressed in Human Cells, fused with a polyhistidine tag at the C-terminus.
Species	Human
Source	Human Cells
ProteinLength	1-343 aa
Form	Lyophilized from sterile PBS, pH 7.5.
Bio-activity	Measured by its binding ability in a functional ELISA. Immobilized human CD155 at 2 µg/ml (100 µl/well) can bind human DNAM1 with a linear ranger of 1.28-32 ng/ml.
Molecular Mass	The recombinant human CD155 consists of 334 amino acids and has a predicted molecular mass of 36.5 kDa. As a result of glycosylation, the rhCD155/Fc monomer migrates as approximately 60-65 kDa band in SDS-PAGE under reducing conditions.
Endotoxin	< 1.0 EU per µg of the protein as determined by the LAL method.
Purity	> 97 % as determined by SDS-PAGE
Storage	Store it under sterile conditions at -20°C to -80°C upon receiving. Recommend to aliquot the protein into smaller quantities for optimal storage. Avoid repeated freeze-thaw cycles.

 Tel: 1-631-559-9269 1-516-512-3133

 Email: info@creative-biomart.com  Fax: 1-631-938-8127

 45-1 Ramsey Road, Shirley, NY 11967, USA

Reconstitution It is recommended that sterile water be added to the vial to prepare a stock solution of 0.2 ug/ul. Centrifuge the vial at 4°C before opening to recover the entire contents.

GENE INFORMATION

Gene Name PVR poliovirus receptor [Homo sapiens]

Official Symbol PVR

Synonyms PVR; poliovirus receptor; PVS; CD155; HVED; Necl 5; NECL5; nectin like 5; Tage4; nectin-like 5; nectin-like protein 5; TAGE4; Necl-5; FLJ25946;

Gene ID 5817

mRNA Refseq NM_001135768

Protein Refseq NP_001129240

MIM 173850

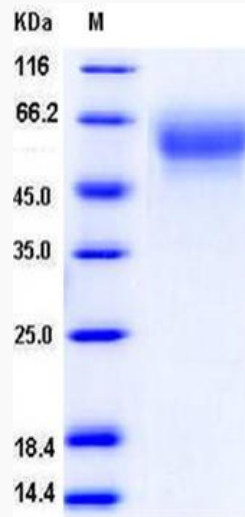
UniProt ID P15151

 Tel: 1-631-559-9269 1-516-512-3133

 Email: info@creative-biomart.com  Fax: 1-631-938-8127

 45-1 Ramsey Road, Shirley, NY 11967, USA

SDS-PAGE



 Tel: 1-631-559-9269 1-516-512-3133

 Email: info@creative-biomart.com  Fax: 1-631-938-8127

 45-1 Ramsey Road, Shirley, NY 11967, USA