

# Recombinant Human PVR Protein (Trp21-Asn343), C-mFc and 6xHis-tagged

**Cat. No.** PVR-559H    **Lot. No.** (See product label)

## SPECIFICATION

<b>Product Overview</b>	Recombinant Human PVR Protein (Trp21-Asn343) with C-mFc and 6xHis tag was expressed in HEK293.
<b>Species</b>	Human
<b>Source</b>	HEK293
<b>ProteinLength</b>	Trp21-Asn343
<b>Description</b>	The protein encoded by this gene is a transmembrane glycoprotein belonging to the immunoglobulin superfamily. The external domain mediates cell attachment to the extracellular matrix molecule vitronectin, while its intracellular domain interacts with the dynein light chain Tctex-1/DYNLT1. The gene is specific to the primate lineage, and serves as a cellular receptor for poliovirus in the first step of poliovirus replication. Multiple transcript variants encoding different isoforms have been found for this gene.
<b>Form</b>	Lyophilized
<b>Molecular Mass</b>	62.2 kDa
<b>Purity</b>	> 95% as determined by SDS-PAGE and Coomassie blue staining.
<b>Storage</b>	Store at -80 centigrade for 12 months (Avoid repeated freezing and thawing)

 Tel: 1-631-559-9269    1-516-512-3133

 Email: [info@creative-biomart.com](mailto:info@creative-biomart.com)     Fax: 1-631-938-8127

 45-1 Ramsey Road, Shirley, NY 11967, USA

**Storage Buffer** Lyophilized from sterile PBS, pH 7.4. Normally 5 % - 34 % trehalose is added as protectants before lyophilization.

## GENE INFORMATION

**Gene Name** PVR poliovirus receptor [ Homo sapiens (human) ]

**Official Symbol** PVR

**Synonyms** PVR; poliovirus receptor; PVS; CD155; HVED; Necl 5; NECL5; nectin like 5; Tage4; nectin-like 5; nectin-like protein 5; TAGE4; Necl-5; FLJ25946;

**Gene ID** 5817

**mRNA Refseq** NM\_001135768

**Protein Refseq** NP\_001129240

**MIM** 173850

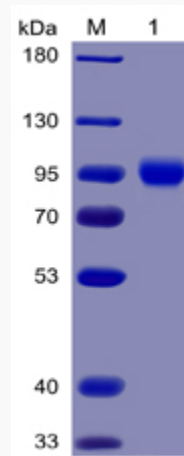
**UniProt ID** P15151

 Tel: 1-631-559-9269 1-516-512-3133

 Email: [info@creative-biomart.com](mailto:info@creative-biomart.com)  Fax: 1-631-938-8127

 45-1 Ramsey Road, Shirley, NY 11967, USA

SDS-PAGE



 Tel: 1-631-559-9269 1-516-512-3133

 Email: [info@creative-biomart.com](mailto:info@creative-biomart.com)  Fax: 1-631-938-8127

 45-1 Ramsey Road, Shirley, NY 11967, USA