

Recombinant Human PVR protein, His-Avi-tagged

Cat. No. PVR-614H **Lot. No.** (See product label)

SPECIFICATION

Product Overview	Recombinant Human PVR protein(P15151-1)(Trp21-Asn343), fused with C-terminal His and Avi tag, was expressed in HEK293.
Species	Human
Source	HEK293
ProteinLength	Trp21-Asn343
Tag	C-His-Avi
Form	Lyophilized from 0.22µm filtered solution in PBS (pH 7.4). Normally 5% trehalose is added as protectant before lyophilization.
Bio-activity	Immobilized Human CD155, His Tag at 5µg/ml (100µl/Well) on the plate. Dose response curve for Human TIGIT, hFc Tag with the EC50 70.5ng/ml determined by ELISA.
Molecular Mass	The protein has a predicted MW of 38 kDa. Due to glycosylation, the protein migrates to 55-70 kDa based on Tris-Bis PAGE result.
Endotoxin	Less than 1EU per µg by the LAL method.
Purity	> 95% as determined by Tris-Bis PAGE; > 95% as determined by SEC-HPLC

 Tel: 1-631-559-9269 1-516-512-3133

 Email: info@creative-biomart.com  Fax: 1-631-938-8127

 45-1 Ramsey Road, Shirley, NY 11967, USA

Storage Reconstituted protein stable at -80°C for 12 months, 4°C for 1 week. Use a manual defrost freezer and avoid repeated freeze-thaw cycles.

Reconstitution Centrifuge tubes before opening. Reconstituting to a concentration more than 100 µg/ml is recommended. Dissolve the lyophilized protein in distilled water.

GENE INFORMATION

Gene Name [PVR poliovirus receptor \[Homo sapiens \]](#)

Official Symbol [PVR](#)

Synonyms PVR; poliovirus receptor; PVS; CD155; HVED; Necl 5; NECL5; nectin like 5; Tage4; nectin-like 5; nectin-like protein 5; TAGE4; Necl-5; FLJ25946;

Gene ID [5817](#)

mRNA Refseq [NM_001135768](#)

Protein Refseq [NP_001129240](#)

MIM [173850](#)

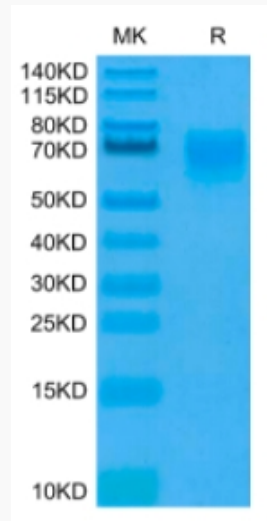
UniProt ID [P15151](#)

 Tel: 1-631-559-9269 1-516-512-3133

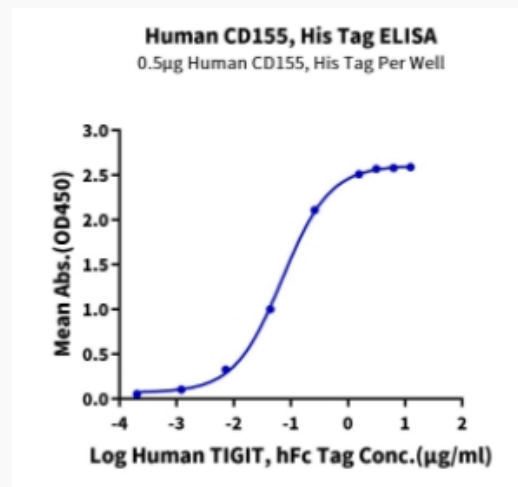
 Email: info@creative-biomart.com  Fax: 1-631-938-8127

 45-1 Ramsey Road, Shirley, NY 11967, USA

Tris-Bis PAGE



ELISA Data



 Tel: 1-631-559-9269 1-516-512-3133

 Email: info@creative-biomart.com  Fax: 1-631-938-8127

 45-1 Ramsey Road, Shirley, NY 11967, USA