

# Recombinant Human PVRIG Full Length Transmembrane protein, His/SUMO-tagged

**Cat. No.** PVRIG-36H    **Lot. No.** (See product label)

## SPECIFICATION

<b>Product Overview</b>	Recombinant Human PVRIG(1-326 aa) fused with His/SUMO tag was expressed in E. coli.
<b>Species</b>	Human
<b>Source</b>	E.coli
<b>ProteinLength</b>	1-326aa
<b>Form</b>	<p>If the delivery form is liquid, the default storage buffer is Tris/PBS-based buffer, 5%-50% glycerol.</p> <p>If the delivery form is lyophilized powder, the buffer before lyophilization is Tris/PBS-based buffer, 6% Trehalose, pH 8.0.</p>
<b>Molecular Mass</b>	50.3 kDa
<b>AA Sequence</b>	<p>MRTEAQVPALQPPEPGLEGAMGHRTLVLPPWVLLTLCVTAGTPEVWVQVRMEATEL  SSFTIRCGFLGSGSISLVTVSWGGPNGAGGTTLAVLHPERGIRQWAPARQARWETQ  SSISLILEGSGASSPCANTTFCCKFASFPEGSWEACGSLPPSSDPGLSAPPTPAPILR  ADLAGILGVSGVLLFGCVYLLHLLRRHKHRPAPRLQPSRTSPQAPRARAWAPSQAS  QAALHVPYATINTSCRPATLDTAHPHGGPSWWASLPHTAAHRPQGPAAWASTPIPA  RGSFVSVENGLYAQAGERPPHTGPGTLFPDPRGPRAMEGPLGVR</p>
<b>Purity</b>	Greater than 85% as determined by SDS-PAGE.

 Tel: 1-631-559-9269    1-516-512-3133

 Email: [info@creative-biomart.com](mailto:info@creative-biomart.com)     Fax: 1-631-938-8127

 45-1 Ramsey Road, Shirley, NY 11967, USA

**Storage** Store at -20°C/-80°C upon receipt, aliquoting is necessary for mutiple use. Avoid repeated freeze-thaw cycles.

**Reconstitution** Please reconstitute protein in deionized sterile water to a concentration of 0.1-1.0 mg/mL. We recommend to add 5-50% of glycerol (final concentration) and aliquot for long-term storage at -20°C/-80°C. Our default final concentration of glycerol is 50%.

## GENE INFORMATION

**Gene Name** PVRIG poliovirus receptor related immunoglobulin domain containing [ Homo sapiens ]

**Official Symbol** PVRIG

**Synonyms** PVRIG; poliovirus receptor related immunoglobulin domain containing; transmembrane protein PVRIG; C7orf15; MGC2463; poliovirus receptor-related immunoglobulin domain-containing protein; MGC104322; MGC138295; MGC138297;

**Gene ID** 79037

**mRNA Refseq** NM\_024070

**Protein Refseq** NP\_076975

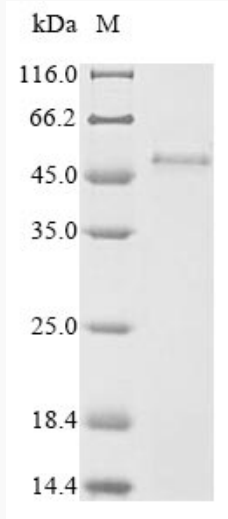
**UniProt ID** Q6DKI7

 Tel: 1-631-559-9269 1-516-512-3133

 Email: [info@creative-biomart.com](mailto:info@creative-biomart.com)  Fax: 1-631-938-8127

 45-1 Ramsey Road, Shirley, NY 11967, USA

**SDS-PAGE**



 Tel: 1-631-559-9269 1-516-512-3133

 Email: [info@creative-biomart.com](mailto:info@creative-biomart.com)  Fax: 1-631-938-8127

 45-1 Ramsey Road, Shirley, NY 11967, USA