

Recombinant Human PVRL1 Protein (ECD), Fc-His-tagged(C-ter)

Cat. No. PVRL1-275H **Lot. No.** (See product label)

SPECIFICATION

Product Overview	Recombinant Human PVRL1 Protein (ECD) with Fc-His tag (C-ter) was expressed in HEK293.
Species	Human
Source	HEK293
ProteinLength	Met1-Thr334
Description	<p>This gene encodes an adhesion protein that plays a role in the organization of adherens junctions and tight junctions in epithelial and endothelial cells. The protein is a calcium(2+)-independent cell-cell adhesion molecule that belongs to the immunoglobulin superfamily and has 3 extracellular immunoglobulin-like loops, a single transmembrane domain (in some isoforms), and a cytoplasmic region. This protein acts as a receptor for glycoprotein D (gD) of herpes simplex viruses 1 and 2 (HSV-1, HSV-2), and pseudorabies virus (PRV) and mediates viral entry into epithelial and neuronal cells. Mutations in this gene cause cleft lip and palate/ectodermal dysplasia 1 syndrome (CLPED1) as well as non-syndromic cleft lip with or without cleft palate (CL/P). Alternative splicing results in multiple transcript variants encoding proteins with distinct C-termini. [provided by RefSeq, Oct 2009]</p>
Form	Powder
Endotoxin	Endotoxin level is less than 0.1

 Tel: 1-631-559-9269 1-516-512-3133

 Email: info@creative-biomart.com  Fax: 1-631-938-8127

 45-1 Ramsey Road, Shirley, NY 11967, USA

	EU/μg of the protein, as determined by the LAL test.
Purity	> 95% (by SDS-PAGE)
Applications	Binding, SDS-PAGE
Notes	For laboratory research only, not for drug, diagnostic or other use.
Storage	Lyophilized protein should be stored at -20°C or -80°C. After reconstitution, aliquot and store at -20°C for up to one month, at 2-8°C for up to one week. Storage in frost free freezers is not recommended. Avoid repeated freeze/thaw cycles. Suggest spin the vial prior to opening.
Storage Buffer	PBS (pH 7.4)
Reconstitution	Reconstitute to a concentration of 0.1-0.5 mg/ml in sterile distilled water.
GENE INFORMATION	
Gene Name	PVRL1 poliovirus receptor-related 1 (herpesvirus entry mediator C) [Homo sapiens]
Official Symbol	PVRL1
Synonyms	PVRL1; poliovirus receptor-related 1 (herpesvirus entry mediator C); ED4, HVEC; poliovirus receptor-related protein 1; CD111; CLPED1; HIgR; nectin; OFC7; PRR; PRR1; PVRR1; SK 12; nectin 1; poliovirus receptor-like 1; herpesvirus Ig-like receptor; herpes virus entry mediator C; ectodermal dysplasia 4 (Margarita Island type); ED4; HVEC; PVRR; SK-12; nectin-1; MGC16207; MGC142031;
Gene ID	5818

 Tel: 1-631-559-9269 1-516-512-3133

 Email: info@creative-biomart.com  Fax: 1-631-938-8127

 45-1 Ramsey Road, Shirley, NY 11967, USA

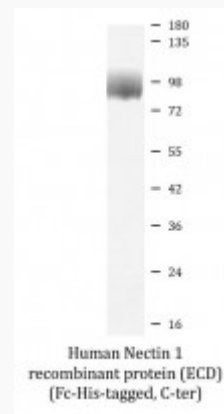
mRNA Refseq [NM_002855](#)

Protein Refseq [NP_002846](#)

MIM [600644](#)

UniProt ID [Q15223](#)

SDS-PAGE



 Tel: 1-631-559-9269 1-516-512-3133

 Email: info@creative-biomart.com  Fax: 1-631-938-8127

 45-1 Ramsey Road, Shirley, NY 11967, USA