

Active Recombinant Human PVRL2 protein

Cat. No. PVRL2-610H **Lot. No.** (See product label)

SPECIFICATION

Product Overview	Recombinant Human PVRL2 protein(NP_002847.1)(Met 1-Leu 360) with quinary-aa peptide (DDDDK) at the C-terminus was expressed and purified in Human Cells.
Species	Human
Source	Human Cells
ProteinLength	1-360 aa
Form	Lyophilized from sterile 100mM Glycine, 10mM NaCl, 50mM Tris, pH 7.5.
Bio-activity	Measured by its binding ability in a functional ELISA. Immobilized human CD112 at 10 µg/ml (100 µl/well) can bind human DNAM1-Fch with a linear range of 1.25-10 µg/ml.
Molecular Mass	The recombinant human CD112 comprises 335 amino acids and has a calculated molecular mass of 36.2 kDa. As a result of glycosylation, the recombinant protein migrates as an approximately 48 kDa protein in SDS-PAGE under reducing conditions.
Endotoxin	< 1.0 EU per µg of the protein as determined by the LAL method.
Purity	> 95 % as determined by SDS-PAGE and SEC-HPLC Analysis.
Storage	Store it under sterile conditions at -20°C to -80°C upon receiving. Recommend to

 Tel: 1-631-559-9269 1-516-512-3133

 Email: info@creative-biomart.com  Fax: 1-631-938-8127

 45-1 Ramsey Road, Shirley, NY 11967, USA

aliquot the protein into smaller quantities for optimal storage. Avoid repeated freeze-thaw cycles.

Reconstitution

It is recommended that sterile water be added to the vial to prepare a stock solution of 0.2 ug/ul. Centrifuge the vial at 4°C before opening to recover the entire contents.

GENE INFORMATION

Gene Name [PVRL2 poliovirus receptor-related 2 \(herpesvirus entry mediator B\) \[Homo sapiens \]](#)

Official Symbol [PVRL2](#)

Synonyms PVRL2; poliovirus receptor-related 2 (herpesvirus entry mediator B); HVEB; poliovirus receptor-related protein 2; CD112; PRR2; PVRR2; nectin-2; poliovirus receptor-like 2; herpesvirus entry protein B;

Gene ID [5819](#)

mRNA Refseq [NM_001042724](#)

Protein Refseq [NP_001036189](#)

MIM [600798](#)

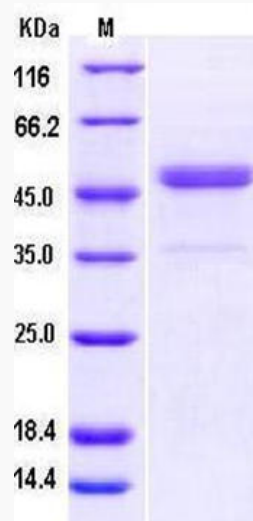
UniProt ID [Q92692](#)

 Tel: 1-631-559-9269 1-516-512-3133

 Email: info@creative-biomart.com  Fax: 1-631-938-8127

 45-1 Ramsey Road, Shirley, NY 11967, USA

SDS-PAGE



 Tel: 1-631-559-9269 1-516-512-3133

 Email: info@creative-biomart.com  Fax: 1-631-938-8127

 45-1 Ramsey Road, Shirley, NY 11967, USA