

Recombinant Human PVRL4 protein, His-Avi-tagged

Cat. No. PVRL4-201H **Lot. No.** (See product label)

SPECIFICATION

Product Overview	Human Nectin-4 Protein is expressed from mammalian with a His and Avi Tag at the C-terminal. It contains Gly32-Val351.
Species	Human
Source	HEK293
ProteinLength	It contains Gly32-Val351.
Description	Nectin-4 seems to be involved in cell adhesion through trans-homophilic and -heterophilic interactions, the latter including specifically interactions with NECTIN1. Does not act as receptor for alpha-herpesvirus entry into cells.(Microbial infection) Acts as a receptor for measles virus.
Form	Supplied as 0.22um filtered solution in PBS (pH 7.4).
Molecular Mass	The protein has a predicted MW of 37.2 kDa.Due to glycosylation, the protein migrates to 46-48KDa based on Bis-Tris PAGE result.
Endotoxin	Less than 0.1EU per ug by the LAL method.
Purity	> 95% as determined by SDS-PAGE; > 95% as determined by HPLC
Storage	The product should be stored at -70°C. Please do not repeated freeze-thaw cycles.

 Tel: 1-631-559-9269 1-516-512-3133

 Email: info@creative-biomart.com  Fax: 1-631-938-8127

 45-1 Ramsey Road, Shirley, NY 11967, USA

Reconstitution It is recommended that sterile water be added to the vial to prepare a stock solution of 0.2 ug/ul. Centrifuge the vial at 4°C before opening to recover the entire contents.

GENE INFORMATION

Gene Name PVRL4 poliovirus receptor-related 4 [Homo sapiens]

Official Symbol PVRL4

Synonyms EDSS1; Ig superfamily receptor LNIR; LNIR; LNIRnectin 4; Nectin4; Nectin-4; poliovirus receptor-related 4; poliovirus receptor-related protein 4; PRR4; PRR4DKFZp686K05193; PVRL4

Gene ID 81607

mRNA Refseq NM_030916

Protein Refseq NP_112178

MIM 609607

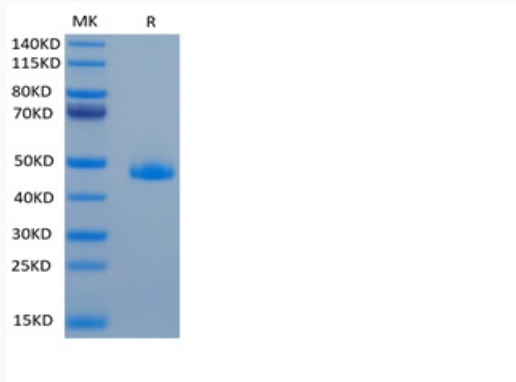
UniProt ID Q96NY8

 Tel: 1-631-559-9269 1-516-512-3133

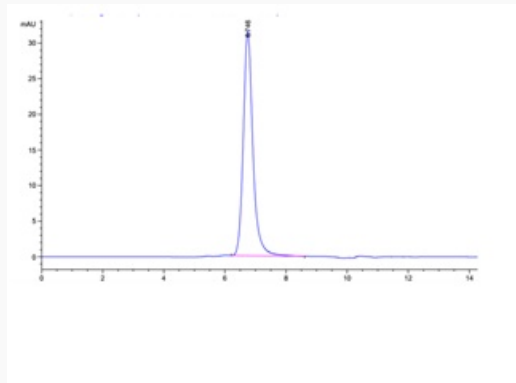
 Email: info@creative-biomart.com  Fax: 1-631-938-8127

 45-1 Ramsey Road, Shirley, NY 11967, USA

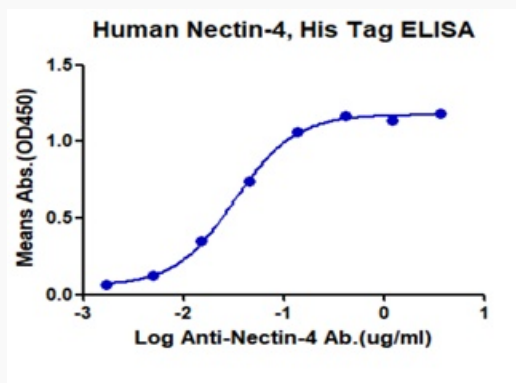
Tris-Bis PAGE



HPLC data



ELISA data



 Tel: 1-631-559-9269 1-516-512-3133

 Email: info@creative-biomart.com  Fax: 1-631-938-8127

 45-1 Ramsey Road, Shirley, NY 11967, USA