

Recombinant Human PXN Protein, His-tagged

Cat. No. PXN-01H Lot. No. (See product label)

SPECIFICATION

Product Overview	Recombinant Human PXN Protein (Asp2-Cys557) with a N-terminal 6x histidine tag was expressed in E. coli.
Species	Human
Source	E.coli
ProteinLength	2-557 a.a.
Description	This gene encodes a cytoskeletal protein involved in actin-membrane attachment at sites of cell adhesion to the extracellular matrix (focal adhesion). Alternatively spliced transcript variants encoding different isoforms have been described for this gene. These isoforms exhibit different expression pattern, and have different biochemical, as well as physiological properties (PMID:9054445).
Form	Lyophilized powder
Molecular Mass	63 kDa
Purity	> 95%
Applications	ELISA, EIA, protein-protein interaction studies, Western Blotting, Dot Blotting, Immunoprecipitation, Protein Array
Storage	Upon arrival, the lyophilized protein may be stored for 2 weeks at 4 centigrade. For

 Tel: 1-631-559-9269 1-516-512-3133

 Email: info@creative-biomart.com  Fax: 1-631-938-8127

 45-1 Ramsey Road, Shirley, NY 11967, USA

long term storage, it is recommended to store desiccated below -20 centigrade in a manual defrost freezer. Following reconstitution, the protein may be stored for 2 weeks under sterile conditions at -20 centigrade. For long term storage, it is recommended to make appropriate aliquots and store at -80 centigrade. Avoid repeated freeze-thaw cycles.

Storage Buffer	Lyophilized from a 0.2 µm filtered solution in 40 mM Tris-HCl (pH 8.0), 50 mM NaCl.
Reconstitution	Briefly spin the vial and bring the contents to the bottom prior to opening. It is recommended to reconstitute at 0.5 - 1.0 mg/mL with sterile deionized water or 1x PBS.
Shipping	Ice Packs

GENE INFORMATION

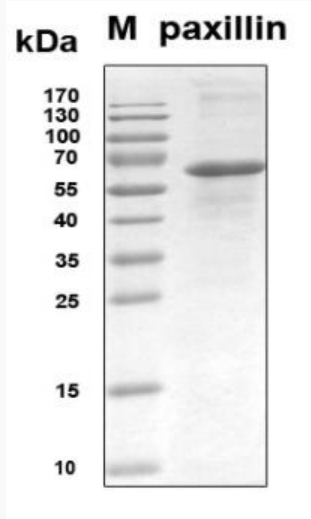
Gene Name	PXN paxillin [Homo sapiens (human)]
Official Symbol	PXN
Synonyms	PXN; paxillin; paxillin; testicular tissue protein Li 134
Gene ID	5829
mRNA Refseq	NM_025157
Protein Refseq	NP_079433
MIM	602505
UniProt ID	P49023

 Tel: 1-631-559-9269 1-516-512-3133

 Email: info@creative-biomart.com  Fax: 1-631-938-8127

 45-1 Ramsey Road, Shirley, NY 11967, USA

SDS-PAGE



 Tel: 1-631-559-9269 1-516-512-3133

 Email: info@creative-biomart.com  Fax: 1-631-938-8127

 45-1 Ramsey Road, Shirley, NY 11967, USA