

Recombinant Human PYCRL protein, GST-tagged

Cat. No. PYCRL-2086H Lot. No. (See product label)

SPECIFICATION

Product Overview	Recombinant Human PYCRL protein(1-274 aa), fused with N-terminal GST tag, was expressed in E.coli.
Species	Human
Source	E.coli
ProteinLength	1-274 aa
Form	The purified protein was lyophilized from sterile phosphate-buffered saline (PBS: 58 mM Na ₂ HPO ₄ , 17 mM NaH ₂ PO ₄ , 68 mM NaCl, pH 8.0). Prior to lyophilization, 5% (w/v) trehalose and 5% (w/v) mannitol were incorporated as cryoprotective excipients.
AASequence	MAAAEPSRRVGFVAGRMAGAIQAQLIRAGKVEAQHILASAPTDRNLCHFQALGC RTTHSNQEVLQSCLLVIFATKPHVLPVLAEVAPVVTTEHILVSVAAGVSLSTLELLP PNTRVLRVLPNLPCVVQEGAIMARGRHVGSSETNLLQHLLEACGRCEEVPEAYVDI HTGLSGSGVAFVCAFSEALAEHAVKMGMPSSLAHRIAQAQTLTGTAKMLLHEGQHPA QLRSDVCTPGGTTIYGLHALEQQGLRAATMSAVEAATCRAKELSRK
Purity	85%, by SDS-PAGE with Coomassie Brilliant Blue staining.
Storage	Store at 2-8°C for 1-2 weeks. Aliquot and store at -20°C to -80°C for up to 3 months, reconstitution with sterile water and addition of an equal volume of glycerol. Avoid repeat freeze-thaw cycles.

 Tel: 1-631-559-9269 1-516-512-3133

 Email: info@creative-biomart.com  Fax: 1-631-938-8127

 45-1 Ramsey Road, Shirley, NY 11967, USA



Reconstitution

Dissolve the product in 200 µl sterile water to achieve a working concentration of 0.25 g/µl. If experimental compatibility allows, mix the aqueous solution with an equal volume of glycerol (1:1 ratio) after initial reconstitution.

GENE INFORMATION

Gene Name

PYCRL pyrroline-5-carboxylate reductase-like [Homo sapiens]

Official Symbol

PYCRL

Synonyms

PYCRL; pyrroline-5-carboxylate reductase-like; pyrroline-5-carboxylate reductase 3; FLJ13852; P5CR 3; P5C reductase 3; pyrroline-5-carboxylate reductase-like protein;

Gene ID

65263

mRNA Refseq

NM_023078

Protein Refseq

NP_075566

UniProt ID

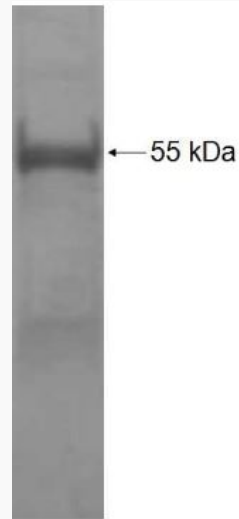
Q53H96

Tel: 1-631-559-9269 1-516-512-3133

Email: info@creative-biomart.com Fax: 1-631-938-8127

45-1 Ramsey Road, Shirley, NY 11967, USA

SDS-PAGE



 Tel: 1-631-559-9269 1-516-512-3133

 Email: info@creative-biomart.com  Fax: 1-631-938-8127

 45-1 Ramsey Road, Shirley, NY 11967, USA