

# Recombinant Full Length Human PYGM Protein, C-Flag-tagged

Cat. No. PYGM-1281HFL Lot. No. (See product label)

## SPECIFICATION

<b>Product Overview</b>	Recombinant Full Length Human PYGM Protein, fused to Flag-tag at C-terminus, was expressed in Mammalian cells.
<b>Species</b>	Human
<b>Source</b>	Mammalian Cells
<b>Description</b>	This gene encodes a muscle enzyme involved in glycogenolysis. Highly similar enzymes encoded by different genes are found in liver and brain. Mutations in this gene are associated with McArdle disease (myophosphorylase deficiency), a glycogen storage disease of muscle. Alternative splicing results in multiple transcript variants.
<b>Form</b>	25 mM Tris HCl, pH 7.3, 100 mM glycine, 10% glycerol.
<b>Molecular Mass</b>	96.9 kDa
<b>AA Sequence</b>	MSRPLSDQEKRKQISVRGLAGVENVTELKKNFNRHLHFTLVKDRNVATPRDYYFAL AHTVRDHLVGRWIR TQQHYEYKDPKRIYYLSLEFYMGRTLQNTMVNLALENACDEA TYQLGLDMEELIEEDAGLGNGGLGRL AACFLDSMATLGLAAYGYGIRYEFGIFNQ KISGGWQMEEADDWLRYGNPWEKARPEFTLPVHFYGHVEHT SQGAKWVDTQVVL AMPYDTPVPGYRNNVVNTMRLWSAKAPNDFNLKDFNVGGYIQAVLDRNLAENISRV L YPNDNFFEGKELRLKQEYFVVAATLQDIIRRFKSSKFGCRDPVRTNFDAFPDKVAI QLNDTHPSLAIPEL MRILVDLERMDWDKAWDVTVRTCAYTNHTVLPEALERWPVHL LETLPRHLQIYEINQRFLNRVAAAFP GDVDRLRRMSLVEEGAVKRINMAHLCIAGS

 Tel: 1-631-559-9269 1-516-512-3133

 Email: [info@creative-biomart.com](mailto:info@creative-biomart.com)  Fax: 1-631-938-8127

 45-1 Ramsey Road, Shirley, NY 11967, USA

HAVNGVARIHSEILKKTIFKDFYELEPHKFQNKTNGITPR RWLVLCNPGLAEVIAERIG  
 EDFISDLQRLKLLSFVDDEAFIRDVAKVKQENKLFKFAAYLEREYKVHINP NSLFDIQ  
 VKRIHEYKRQLLNCLHVITLYNRIKREPKNKFFVPRTVMIGGKAAPGYHMAKMIIRLVTA  
 IGDV VNHDPAVGDRLRVIFLENYRVSLAEKVIPAADLSEQISTAGTEASGTGNMKFM  
 LNGALTIGTMDGANVEM AEEAGEENFFIFGMRVEDVDKLDQRGYNAQEYYDRIPEL  
 RQVIEQLSSGFFSPKQPDFKDIVNMLMHHDRFKVVFADYEDYIKCQEKVSALYKNPR  
 EWTRMVIRNIATSGKFSSDRITIAQYAREIWGVEPSRQRLPAPDE  
 AITRTRPLEQKLISEEDLAANDILDYKDDDDKV

<b>Purity</b>	> 80% as determined by SDS-PAGE and Coomassie blue staining.
<b>Stability</b>	Stable for 12 months from the date of receipt of the product under proper storage and handling conditions. Avoid repeated freeze-thaw cycles.
<b>Storage</b>	Store at -80 centigrade.
<b>Concentration</b>	>50 ug/mL as determined by microplate BCA method.
<b>Preparation</b>	Recombinant protein was captured through anti-DDK affinity column followed by conventional chromatography steps.
<b>Protein Families</b>	Druggable Genome
<b>Protein Pathways</b>	Insulin signaling pathway, Starch and sucrose metabolism
<b>Full Length</b>	Full L.

## GENE INFORMATION

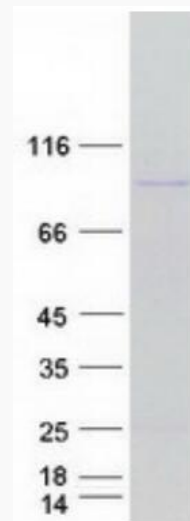
**Gene Name** PYGM glycogen phosphorylase, muscle associated [ Homo sapiens (human) ]

 Tel: 1-631-559-9269 1-516-512-3133

 Email: [info@creative-biomart.com](mailto:info@creative-biomart.com)  Fax: 1-631-938-8127

 45-1 Ramsey Road, Shirley, NY 11967, USA

Official Symbol	PYGM
Synonyms	GSD5
Gene ID	5837
mRNA Refseq	NM_005609.4
Protein Refseq	NP_005600.1
MIM	608455
UniProt ID	P11217



Coomassie blue staining of purified PYGM protein.

Tel: 1-631-559-9269 1-516-512-3133

Email: [info@creative-biomart.com](mailto:info@creative-biomart.com) Fax: 1-631-938-8127

45-1 Ramsey Road, Shirley, NY 11967, USA