

# Recombinant Human PYGM Protein, Myc/DDK-tagged, C13 and N15-labeled

Cat. No. PYGM-4184H Lot. No. (See product label)

## SPECIFICATION

<b>Product Overview</b>	PYGM MS Standard C13 and N15-labeled recombinant protein (NP_005600) with a C-terminal MYC/DDK tag, was expressed in HEK293 cells.
<b>Species</b>	Human
<b>Source</b>	HEK293
<b>Description</b>	This gene encodes a muscle enzyme involved in glycogenolysis. Highly similar enzymes encoded by different genes are found in liver and brain. Mutations in this gene are associated with McArdle disease (myophosphorylase deficiency), a glycogen storage disease of muscle. Alternative splicing results in multiple transcript variants.
<b>Molecular Mass</b>	96.9 kDa
<b>AA Sequence</b>	MSRPLSDQEKRKQISVRGLAGVENVTELKKNFNRHLHFTLVKDRNVATPRDYFFAL AHTVRDHLVGRWIRTQQHYEYKDPKRIYYLSLEFYMGRTLQNTMVNLALENACDEA TYQLGLDMELEEIEEDAGLGNGLGRLAACFLDSMATLGLAAYGYGIRYEFQIFNQ KISGGWQMEEADDWLRYPWEKARPEFTLPVHFYGHVEHTSQGAKWVDTQVVL AMPYDTPVPGYRNNVNTMRLWSAKAPNDFNLKDFNVGGYIQAVLDRNLAENISRV LYPNDNFFEGKELRLKQEYFVVAATLQDIIRRFKSSKFGCRDPVRTNFDAPDKVAIQ LNDTHPSLAPELMRILVDLERMDWDKAWDVTVRTCAYTNHTVLPEALERWPHLLE TLLPRHLQIYEINQRFLNRVAAAFPGDVDRRLRRMSLVEEGAVKRINMAHLCIAGSHA

 Tel: 1-631-559-9269 1-516-512-3133

 Email: [info@creative-biomart.com](mailto:info@creative-biomart.com)  Fax: 1-631-938-8127

 45-1 Ramsey Road, Shirley, NY 11967, USA

VNGVARIHSEILKKTIFKDFYELEPHKFQNKTNGITPRRWLVLCNPGLAEVIAERIGED  
 FISDLDQLRKLLSFVDDEAFIRDVAKVKQENKLFKFAAYLEREYKVHINPNSLFDIQVKR  
 IHEYKRQLLNCLHVITLYNRIKREPKNFFVPRTVMIGGKAAPGYHMAKMIIRLVTAIGD  
 VVNHDPAVGDRLRVIFLENYRVSLAEKVIPAADLSEQISTAGTEASGTGNMKFMLNG  
 ALTIGTMDGANVEMAEAGEENFFIFGMRVEDVDKLDQRGYNAQEYYDRIPELRQVI  
 EQLSSGFFSPKQPDFKDIVNMLMHDRFKVFADYEDYIKCQEKVSALYKNPREWT  
 RMVIRNIATSGKFSSDRRTIAQYAREIWGVEPSRQRLPAPDEAITRTRPLEQKLISEEDL  
 AANDILDYKDDDDKV

**Purity** > 80% as determined by SDS-PAGE and Coomassie blue staining

**Stability** Stable for 3 months from receipt of products under proper storage and handling conditions.

**Storage** Store at -80 centigrade. Avoid repeated freeze-thaw cycles.

**Concentration** 50 µg/mL as determined by BCA

**Storage Buffer** 100 mM glycine, 25 mM Tris-HCl, pH 7.3.

## GENE INFORMATION

**Gene Name** PYGM glycogen phosphorylase, muscle associated [ Homo sapiens (human) ]

**Official Symbol** PYGM

**Synonyms** PYGM; phosphorylase, glycogen, muscle; phosphorylase, glycogen; muscle; glycogen phosphorylase, muscle form; glycogen storage disease type V; McArdle syndrome; myophosphorylase;

**Gene ID** 5837

 Tel: 1-631-559-9269 1-516-512-3133

 Email: [info@creative-biomart.com](mailto:info@creative-biomart.com)  Fax: 1-631-938-8127

 45-1 Ramsey Road, Shirley, NY 11967, USA

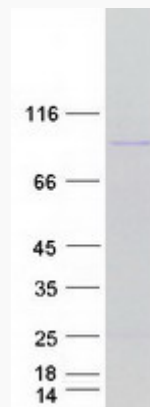
mRNA Refseq [NM\\_005609](#)

Protein Refseq [NP\\_005600](#)

MIM [608455](#)

UniProt ID [P11217](#)

SDS-PAGE



 Tel: 1-631-559-9269 1-516-512-3133

 Email: [info@creative-biomart.com](mailto:info@creative-biomart.com)  Fax: 1-631-938-8127

 45-1 Ramsey Road, Shirley, NY 11967, USA