

Recombinant Human PYY Protein, His-tagged, OVA Conjugated

Cat. No. PYY-2831H Lot. No. (See product label)

SPECIFICATION

Product Overview	OVA Conjugated Recombinant Human PYY Protein (Tyr29-Tyr49) fused with a N-His tag.
Species	Human
Source	Protein Conjugation
ProteinLength	Tyr29-Tyr49
Description	<p>This gene encodes a member of the neuropeptide Y (NPY) family of peptides. The encoded preproprotein is proteolytically processed to generate two alternative peptide products that differ in length by three amino acids. These peptides, secreted by endocrine cells in the gut, exhibit different binding affinities for each of the neuropeptide Y receptors. Binding of the encoded peptides to these receptors mediates regulation of pancreatic secretion, gut mobility and energy homeostasis. Rare variations in this gene could increase susceptibility to obesity and elevated serum levels of the encoded peptides may be associated with anorexia nervosa.</p>
Form	Freeze-dried powder
Purity	> 90%
Applications	Immunogen; SDS-PAGE; WB.

 Tel: 1-631-559-9269 1-516-512-3133

 Email: info@creative-biomart.com  Fax: 1-631-938-8127

 45-1 Ramsey Road, Shirley, NY 11967, USA

Stability	The thermal stability is described by the loss rate. The loss rate was determined by accelerated thermal degradation test, that is, incubate the protein at 37 centigrade for 48h, and no obvious degradation and precipitation were observed. The loss rate is less than 5% within the expiration date under appropriate storage condition.
Storage	Avoid repeated freeze/thaw cycles. Store at 2-8 centigrade for one month. Aliquot and store at -80 centigrade for 12 months.
Storage Buffer	PBS, pH7.4.
Reconstitution	Reconstitute in PBS (pH7.4) to a concentration of 0.1-1.0 mg/mL. Do not vortex.
Conjugation	OVA

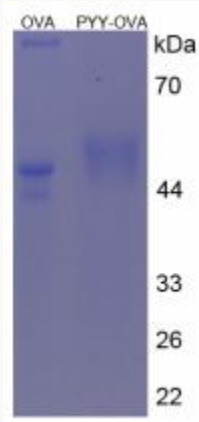
GENE INFORMATION

Gene Name	PYY peptide YY [Homo sapiens]
Official Symbol	PYY
Synonyms	PYY; peptide YY; PYY1; PYY-I; peptide tyrosine tyrosine;
Gene ID	5697
mRNA Refseq	NM_004160
Protein Refseq	NP_004151
MIM	600781
UniProt ID	P10082

 Tel: 1-631-559-9269 1-516-512-3133

 Email: info@creative-biomart.com  Fax: 1-631-938-8127

 45-1 Ramsey Road, Shirley, NY 11967, USA



Tel: 1-631-559-9269 1-516-512-3133

Email: info@creative-biomart.com Fax: 1-631-938-8127

45-1 Ramsey Road, Shirley, NY 11967, USA