

Recombinant Human PZP Protein (Asn341-Ser690), N-His tagged

Cat. No. PZP-5459H **Lot. No.** (See product label)

SPECIFICATION

Product Overview	Recombinant human PZP (Asn341-Ser690) fused with the N-His tag was expressed in E. coli.
Species	Human
Source	E.coli
ProteinLength	Asn341-Ser690
Description	The protein encoded by this gene is highly expressed in late-pregnancy serum and is similar in structure to alpha-2-macroglobulin. The encoded protein, which acts as a homotetramer, inhibits the activity of all four classes of proteinases. This protein contains cleavage sites for several proteinases. Upon binding of a proteinase, the conformation of this protein changes to trap the proteinase, limiting its activity. This protein appears to be elevated in the sera of presymptomatic Alzheimer's disease patients.
Form	Lyophilized powder/frozen liquid
Molecular Mass	40.71 kDa
Purity	> 90 % as determined by SDS-PAGE
Notes	For research use only.

 Tel: 1-631-559-9269 1-516-512-3133

 Email: info@creative-biomart.com  Fax: 1-631-938-8127

 45-1 Ramsey Road, Shirley, NY 11967, USA

Storage	Use a manual defrost freezer and avoid repeated freeze thaw cycles. Store at 2 to 8 centigrade for one week. Store at -20 to -80 centigrade for twelve months from the date of receipt.
Storage Buffer	0.01M PBS, pH 7.4, 0.02 % NLS
Reconstitution	Reconstitute in sterile water for a stock solution.
Shipping	They are shipped out with dry ice/blue ice unless customers require otherwise.

GENE INFORMATION

Gene Name	PZP PZP alpha-2-macroglobulin like [Homo sapiens (human)]
Official Symbol	PZP
Synonyms	PZP; PZP alpha-2-macroglobulin like; CPAMD6; pregnancy zone protein; C3 and PZP-like alpha-2-macroglobulin domain-containing protein 6; Pregnancy zone protein; pregnancy-zone protein
Gene ID	5858
mRNA Refseq	NM_002864
Protein Refseq	NP_002855
MIM	176420
UniProt ID	P20742

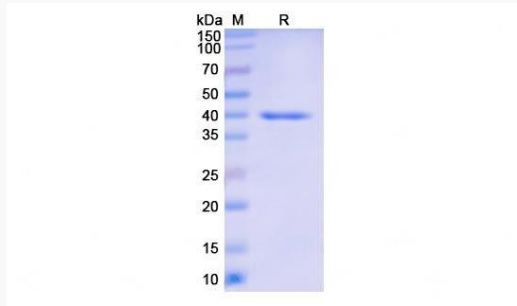
 Tel: 1-631-559-9269 1-516-512-3133

 Email: info@creative-biomart.com  Fax: 1-631-938-8127

 45-1 Ramsey Road, Shirley, NY 11967, USA



SDS-PAGE



Tel: 1-631-559-9269 1-516-512-3133

Email: info@creative-biomart.com Fax: 1-631-938-8127

45-1 Ramsey Road, Shirley, NY 11967, USA